



## JOB VACANCIES: 1<sup>st</sup> quarter 2025

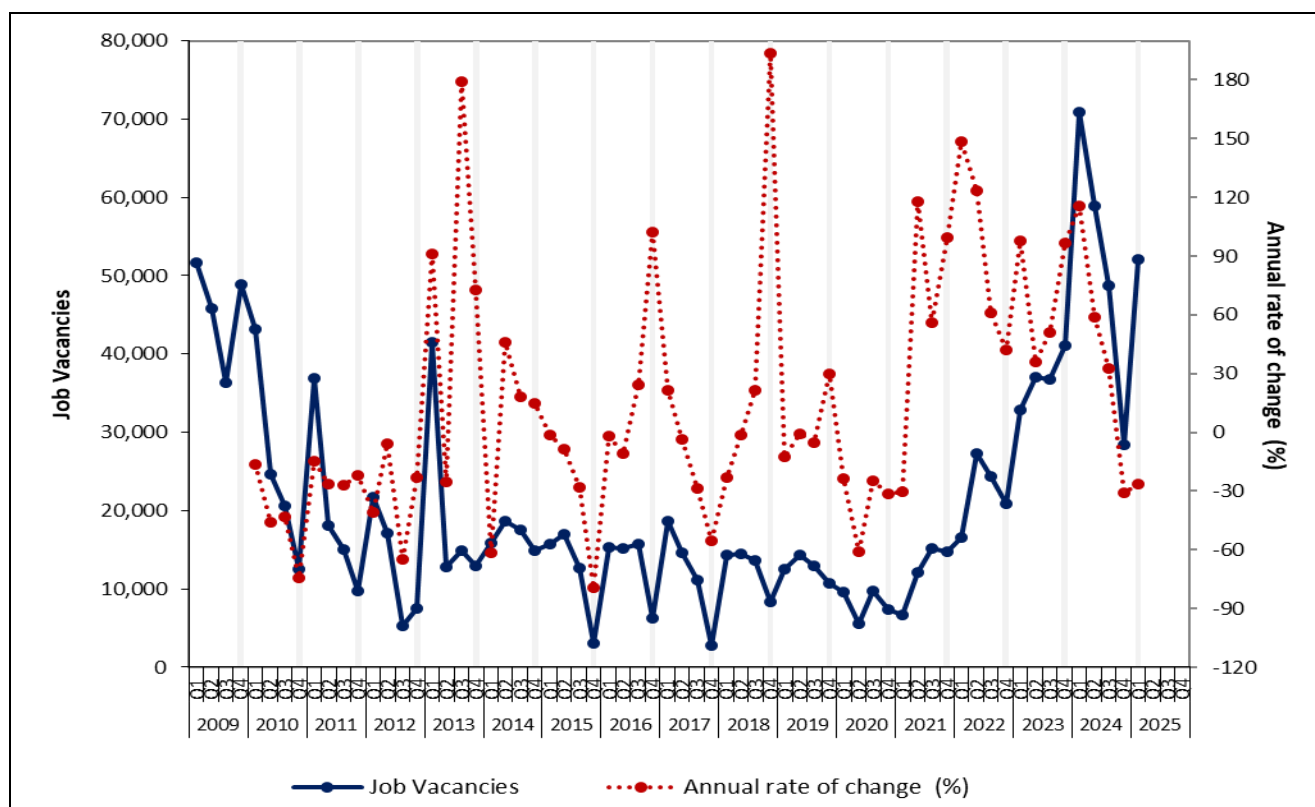
The Hellenic Statistical Authority (ELSTAT) announces the results of the Job Vacancies<sup>1</sup> Survey for the whole economy excluding Primary Sector and Activities of Households, referring to the 1st quarter 2025.

The number of job vacancies in the 1st quarter 2025 recorded a decrease of 26.5% in comparison with the 1st quarter 2024 (52,070 and 70,826 respectively), whereas the corresponding number of job vacancies in the 1st quarter 2024 had recorded an increase of 115.6% in comparison with the 1st quarter 2023 (Table 1, Graph 2).

Table 1 depicts analytically the evolution of the number of job vacancies from the 1st quarter of 2009 to the 1st quarter of 2025.

In Graph 1, the number of job vacancies and the annual rate of change for each quarter of the period 2009-2025 are presented, whereas in Graph 2 the number of Job Vacancies and the annual rate of change of the 1st quarter for the same time period are depicted.

Graph 1: Evolution of Job Vacancies<sup>1</sup>: 1st quarter 2009 – 1st quarter 2025



### Information on methodological issues

Population, Employment and Cost of Living Statistics Division  
Section of Labour Statistics  
Konstantinos Loizos  
Tel: +30 213 135 2105  
e-mail: [k.loizos@statistics.gr](mailto:k.loizos@statistics.gr)

### Information for data provision:

Τηλ. 213 135 2022  
e-mail: [data.dissem@statistics.gr](mailto:data.dissem@statistics.gr)

<sup>1</sup> The number of Job Vacancies refers to the Job Vacancies to be filled in immediately, that is job vacancies, which are to be filled in within a period not longer than three months and also refers to sections B-S of statistical classification of economic activities NACE Rev. 2. Job Vacancies are recorded on the first day of the third month of each calendar quarter.

**Table 1: Evolution of job vacancies<sup>1</sup>,  
1st quarter 2009 – 1st quarter 2025**

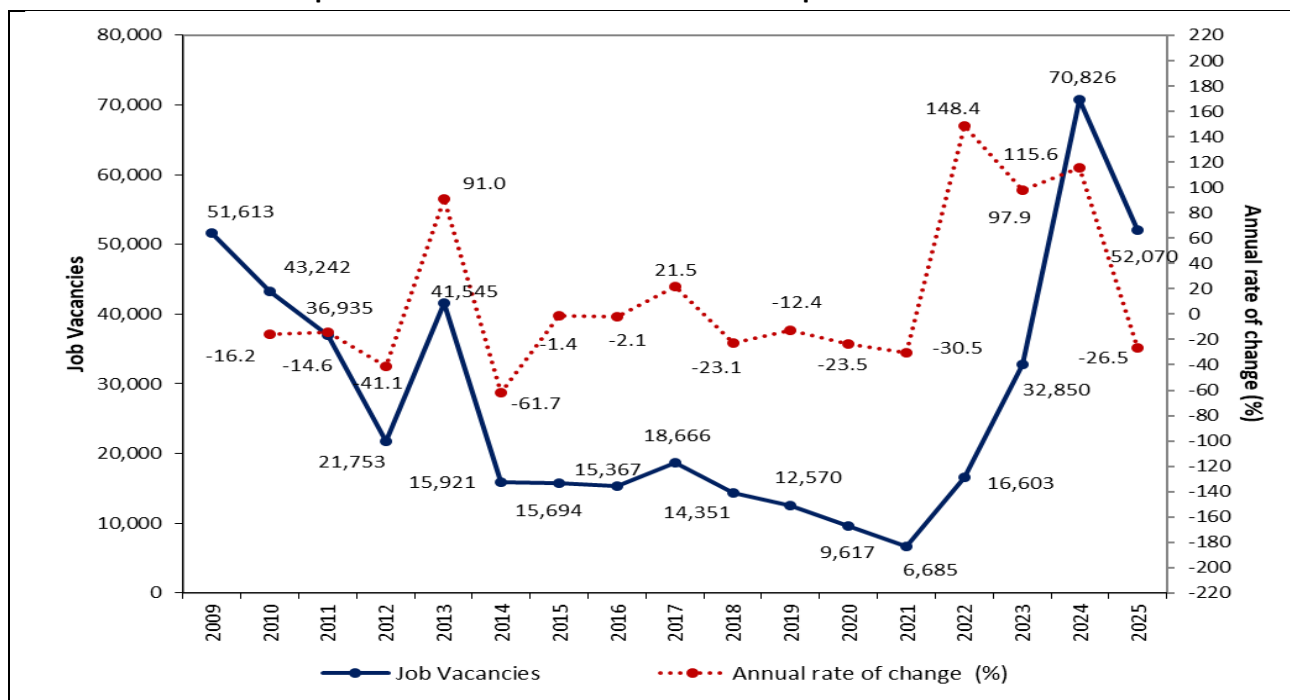
Not seasonally adjusted data

Year	Quarter	<i>Job Vacancies to be filled in immediately</i>	<i>Quarterly rate of change (%)</i>	<i>Annual rate of change (%)</i>
2009	Q1	51,613		
	Q2	45,886	-11.1	
	Q3	36,356	-20.8	
	Q4	48,897	34.5	
2010	Q1	43,242	-11.6	-16.2
	Q2	24,700	-42.9	-46.2
	Q3	20,638	-16.4	-43.2
	Q4	12,561	-39.1	-74.3
2011	Q1	36,935	194.0	-14.6
	Q2	18,159	-50.8	-26.5
	Q3	15,043	-17.2	-27.1
	Q4	9,775	-35.0	-22.2
2012	Q1	21,753	122.5	-41.1
	Q2	17,124	-21.3	-5.7
	Q3	5,325	-68.9	-64.6
	Q4	7,520	41.2	-23.1
2013	Q1	41,545	452.5	91.0
	Q2	12,747	-69.3	-25.6
	Q3	14,852	16.5	178.9
	Q4	13,007	-12.4	73.0
2014	Q1	15,921	22.4	-61.7
	Q2	18,596	16.8	45.9
	Q3	17,541	-5.7	18.1
	Q4	14,930	-14.9	14.8
2015	Q1	15,694	5.1	-1.4
	Q2	17,000	8.3	-8.6
	Q3	12,626	-25.7	-28.0
	Q4	3,119	-75.3	-79.1
2016	Q1	15,367	392.7	-2.1
	Q2	15,178	-1.2	-10.7
	Q3	15,689	3.4	24.3
	Q4	6,315	-59.7	102.5
2017	Q1	18,666	195.6	21.5
	Q2	14,630	-21.6	-3.6
	Q3	11,188	-23.5	-28.7
	Q4	2,825	-74.7	-55.3
2018	Q1	14,351	408.0	-23.1
	Q2	14,466	0.8	-1.1
	Q3	13,584	-6.1	21.4
	Q4	8,288	-39.0	193.4

<sup>1</sup> The number of Job Vacancies refers to the Job Vacancies to be filled in immediately, that is job vacancies, which are to be filled in within a period not longer than three months and also refers to sections B-S of statistical classification of economic activities NACE Rev. 2. Job vacancies are recorded on the first day of the third month of each calendar quarter.

(Table 1 – Continued)

Year	Quarter	Job Vacancies to be filled in immediately	Quarterly rate of change (%)	Annual rate of change (%)
2019	Q1	12,570	51.7	-12.4
	Q2	14,343	14.1	-0.9
	Q3	12,897	-10.1	-5.1
	Q4	10,767	-16.5	29.9
2020	Q1	9,617	-10.7	-23.5
	Q2	5,594	-41.8	-61.0
	Q3	9,685	73.1	-24.9
	Q4	7,382	-23.8	-31.4
2021	Q1	6,685	-9.4	-30.5
	Q2	12,181	82.2	117.8
	Q3	15,125	24.2	56.2
	Q4	14,713	-2.7	99.3
2022	Q1	16,603	12.8	148.4
	Q2	27,246	64.1	123.7
	Q3	24,324	-10.7	60.8
	Q4	20,927	-14.0	42.2
2023	Q1	32,850	57.0	97.9
	Q2	37,107	13.0	36.2
	Q3	36,801	-0.8	51.3
	Q4	41,120	11.7	96.5
2024	Q1	70,826	72.2	115.6
	Q2	58,941	-16.8	58.8
	Q3	48,813	-17.2	32.6
	Q4	28,365	-41.9	-31.0
2025	Q1	52,070	83.6	-26.5

Graph 2: Evolution of Job Vacancies<sup>1</sup> of 1st quarter 2009 –2025

<sup>1</sup> The number of Job Vacancies refers to the Job Vacancies to be filled in immediately, that is job vacancies, which are to be filled in within a period not longer than three months and also refers to sections B-S of statistical classification of economic activities NACE Rev. 2. Job vacancies are recorded on the first day of the third month of each calendar quarter.

## EXPLANATORY NOTES

<b>Survey on Job Vacancies</b>	The Survey on Job Vacancies is conducted on a quarterly basis in a sample of enterprises, aiming at recording the number of job vacancies in the whole economy excluding Primary Sector and Activities of Households, of NACE Rev. 2.
<b>Purpose of the survey</b>	The purpose of the survey is to record on a quarterly basis the job vacancies to be filled in immediately, that is job vacancies, which are to be filled in within a period <u>not longer</u> than three months.
<b>Methodology</b>	<p>Data for the number of job vacancies are collected with the Labour Cost and Job Vacancies survey which is conducted on a quarterly basis.</p> <p>The statistical population is the total number of enterprises employing at least three (3) employees and belongs to sections B-S of Nace Rev.2. The survey covers the entire Country.</p> <p>The one-stage stratified sampling method is applied, using the enterprise as a surveyed unit. The strata are derived from the combinations of the 2-digit code of economic activity (NACE Rev.2) and the enterprise size class.</p> <p>The sampling frame is the current Business Register of ELSTAT.</p> <p>Since the 3<sup>rd</sup> quarter of 2023 the survey is conducted via web questionnaire (CAWI).</p>
<b>Legal Framework</b>	Regulations (EC) 453/2008, (EC) 1062/2008 and (EC) 19/2009 of the European Parliament and of the Council.
<b>Reference date</b>	Job vacancies are recorded on the 1 <sup>st</sup> day of the 3 <sup>rd</sup> month of each calendar quarter.
<b>Definitions</b>	<p>The <b>statistical unit</b> is the enterprise employing at least three (3) employees.</p> <p><b>Job vacancy</b> is considered a paid post that is newly created, unoccupied, or about to become vacant, for which the employer is taking active steps and is prepared to take further steps to find a suitable candidate from outside the enterprise concerned and which the employer intends to fill either immediately or in the near future. It should be noted that job vacancies refer only to employees.</p> <p><b>A vacant post which is going to be filled by the following categories is not considered as Job Vacancy:</b></p> <ul style="list-style-type: none"><li>➤ an apprentice without remuneration coming either by the employer or through the Social Security Funds</li><li>➤ contractors which are not on the payroll list,</li><li>➤ personnel who are re-hired or return to the enterprise after a holiday, paid or not, leave</li><li>➤ internal movement of a member of personnel inside the enterprise</li></ul> <p><b>Job Vacancies to be filled in immediately</b> are job vacancies for full or part-time employment, which are to be filled in within a period <u>not longer than three months</u>.</p>

<b>Statistical classifications</b>	The European statistical classification of economic activities NACE Rev. 2 is used.
<b>Coverage of NACE Rev. 2 sections</b>	<ul style="list-style-type: none"> <li>B Mining and quarrying</li> <li>C Manufacturing</li> <li>D Electricity, gas, steam and air conditioning supply</li> <li>E Water supply, sewerage, waste management and remediation activities</li> <li>F Construction</li> <li>G Wholesale and Retail Trade, Repair of Motor Vehicles and Motorcycles</li> <li>H Transportation and Storage</li> <li>I Accommodation and Food Services Activities</li> <li>J Information and Communication</li> <li>K Financial and insurance activities</li> <li>L Real Estate activities</li> <li>M Professional, scientific and technical activities</li> <li>N Administrative and support service activities</li> <li>O Public Administration and Defence; Compulsory Social Security</li> <li>P Education</li> <li>Q Human Health and Social Work Activities</li> <li>R Arts, Entertainment and Recreation</li> <li>S Other Service Activities</li> </ul>

**References** Analytical tables with data on Job Vacancies can be found on the ELSTAT website, at the link: <https://www.statistics.gr/en/statistics/-/publication/SJO41>