



## ISSUING OF MOTOR VEHICLE LICENSES: APRIL 2026

The Hellenic Statistical Authority announces that in April 2026, 23,273 road motor cars (both new and used from abroad) were put into circulation for the first time, recording a decrease 4.6% compared with the corresponding month of 2025 when the number of road motor cars was 24,404. In April 2025, a 2.9% increase had been observed in comparison with the corresponding month of 2024 (Table 1 - Graphs 1,2,3,5). A total number of 15,130 new cars were put into circulation in April 2026 compared with 15,658 in April 2025, recording a decrease 3.4%.

The motorcycles over 50cc (both new and used from abroad) that were put into circulation for the first time in April 2026 amounted to 8,704, against 7,377 in April 2025, thus recording a 18% increase. In April 2025, a 15.7% decrease had been observed in comparison with the corresponding month of 2024 (Table 1 - Graph 4). Out of the above motorcycles 8,344 were new, while the corresponding figure in April 2025 was 7,037, recording a 18.6% increase.

During the period January - April 2026, 89,661 road motor cars (both new and used from abroad) were put into circulation for the first time, representing an increase of 3.3% compared to the corresponding period of 2025 when the number of road motor cars was 86,803. During the period January - April 2025 a decrease of 0.5% had been observed in comparison with the corresponding period of 2024 (Table 3 - Graphs 6,7). Out of the above number of road motor cars that were put into circulation from January to April 2026 52,992 were new, while the corresponding number during the respective period of 2025 was 51,457, recording an increase of 3.0%.

During the period January - April 2026 the motorcycles over 50cc (both new and used from abroad) were put into circulation for the first time amounted to 24,702 against 22,407 in the respective period of 2025, thus representing a 10.2% increase. A decrease of 3.6% had been observed during the period January - April 2025 in comparison with the corresponding period of 2024 (Table 3 - Graphs 6,7). A total number of 23,391 new motorcycles were put into circulation, from January to April 2026, compared with 21,236 during the corresponding period of 2025, recording a 10.1% increase.

*Information on methodological issues:*

*Sectoral Statistics Division  
Transport Statistics Section*

Elpida Kleftogianni

Tel: +30 213 135 3087

e-mail: [e.kleftogianni@statistics.gr](mailto:e.kleftogianni@statistics.gr)

Information for data provision:

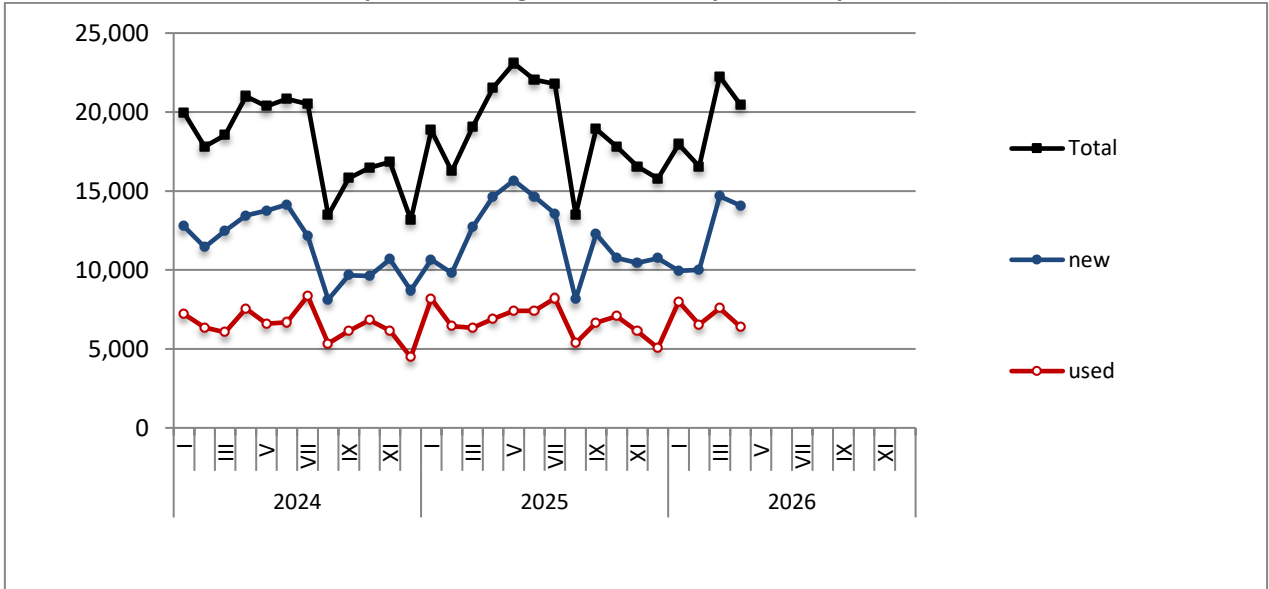
Tel: +30 213 135 2022

e-mail: [data.dissem@statistics.gr](mailto:data.dissem@statistics.gr)

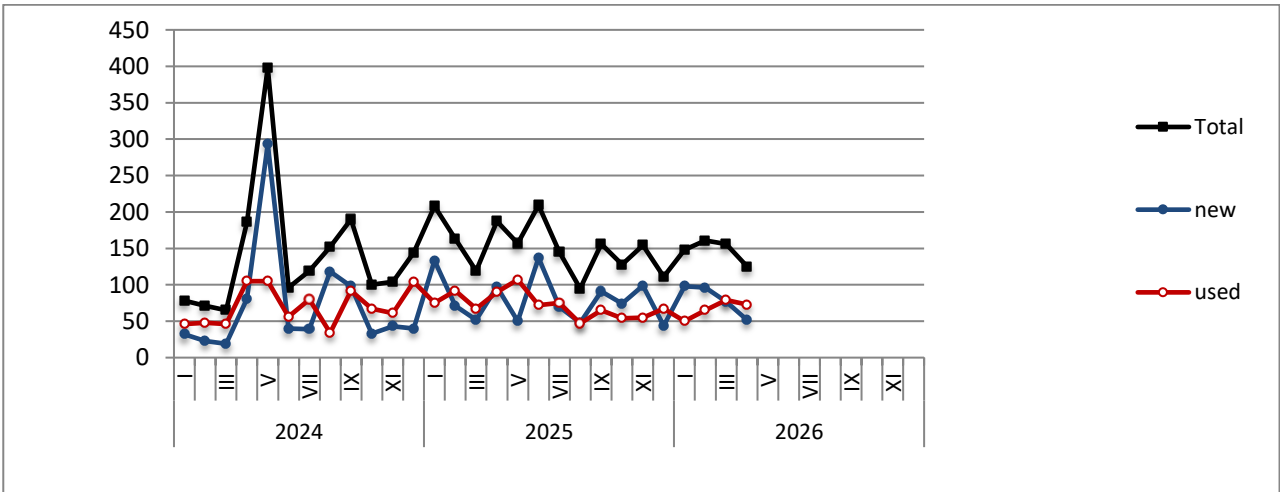
Table 1. Road motor vehicles, both new and used, put into circulation for the first time in Greece: April 2024 - 2026															
Category of Road Motor Vehicles	April									Change (%)					
	2024			2025			2026			2025/2024			2026/2025		
	Total	New	Used	Total	New	Used	Total	New	Used	Total	New	Used	Total	New	Used
<b>Greece, total</b>															
Road Motor Vehicles,total	32,459	22,685	9,774	31,781	22,695	9,086	31,977	23,474	8,503	-2.1%	0.0%	-7.0%	0.6%	3.4%	-6.4%
<b>1. Road motor cars</b>	<b>23,711</b>	<b>14,343</b>	<b>9,368</b>	<b>24,404</b>	<b>15,658</b>	<b>8,746</b>	<b>23,273</b>	<b>15,130</b>	<b>8,143</b>	<b>2.9%</b>	<b>9.2%</b>	<b>-6.6%</b>	<b>-4.6%</b>	<b>-3.4%</b>	<b>-6.9%</b>
Passenger Cars	21,000	13,448	7,552	21,543	14,641	6,902	20,465	14,072	6,393	2.6%	8.9%	-8.6%	-5.0%	-3.9%	-7.4%
Buses	186	81	105	187	97	90	125	52	73	0.5%	19.8%	-14.3%	-33.2%	-46.4%	-18.9%
Lorries	2,525	814	1,711	2,674	920	1,754	2,683	1,006	1,677	5.9%	13.0%	2.5%	0.3%	9.3%	-4.4%
<b>2. Motorcycles &gt; 50 cc</b>	<b>8,748</b>	<b>8,342</b>	<b>406</b>	<b>7,377</b>	<b>7,037</b>	<b>340</b>	<b>8,704</b>	<b>8,344</b>	<b>360</b>	<b>-15.7%</b>	<b>-15.6%</b>	<b>-16.3%</b>	<b>18.0%</b>	<b>18.6%</b>	<b>5.9%</b>
<b>Prefecture of Attica</b>															
Road Motor Vehicles,total	17,163	13,464	3,699	18,104	14,837	3,267	19,052	15,777	3,275	5.5%	10.2%	-11.7%	5.2%	6.3%	0.2%
<b>1. Road motor cars</b>	<b>13,266</b>	<b>9,642</b>	<b>3,624</b>	<b>14,744</b>	<b>11,569</b>	<b>3,175</b>	<b>14,949</b>	<b>11,752</b>	<b>3,197</b>	<b>11.1%</b>	<b>20.0%</b>	<b>-12.4%</b>	<b>1.4%</b>	<b>1.6%</b>	<b>0.7%</b>
Passenger Cars	12,262	9,137	3,125	13,642	10,961	2,681	13,771	11,078	2,693	11.3%	20.0%	-14.2%	0.9%	1.1%	0.4%
Buses	122	65	57	112	69	43	46	21	25	-8.2%	6.2%	-24.6%	-58.9%	-69.6%	-41.9%
Lorries	882	440	442	990	539	451	1,132	653	479	12.2%	22.5%	2.0%	14.3%	21.2%	6.2%
<b>2. Motorcycles &gt; 50 cc</b>	<b>3,897</b>	<b>3,822</b>	<b>75</b>	<b>3,360</b>	<b>3,268</b>	<b>92</b>	<b>4,103</b>	<b>4,025</b>	<b>78</b>	<b>-13.8%</b>	<b>-14.5%</b>	<b>22.7%</b>	<b>22.1%</b>	<b>23.2%</b>	<b>-15.2%</b>

Table 2. Road motor vehicles, both new and used, put into circulation for the first time in Greece: May 2024 - April 2026									
Category of Road Motor Vehicles	Average May 2024 - Apr. 2025			Average May 2025 - Apr. 2026			Change (%)		
	Average May 2025 - Apr. 2026 / Average May 2024 - Apr. 2025								
	Total	New	Used	Total	New	Used	Total	New	Used
<b>Greece, total</b>									
Road Motor Vehicles,total	27,039	18,610	8,429	28,890	20,012	8,878	6.8%	7.5%	5.3%
<b>1. Road motor cars</b>	<b>20,283</b>	<b>12,168</b>	<b>8,115</b>	<b>21,750</b>	<b>13,175</b>	<b>8,575</b>	<b>7.2%</b>	<b>8.3%</b>	<b>5.7%</b>
Passenger Cars	17,759	11,221	6,538	18,894	12,077	6,817	6.4%	7.6%	4.3%
Buses	165	88	77	145	78	67	-11.9%	-11.4%	-12.4%
Lorries	2,359	859	1,500	2,710	1,020	1,691	14.9%	18.7%	12.7%
<b>2. Motorcycles &gt; 50 cc</b>	<b>6,756</b>	<b>6,442</b>	<b>314</b>	<b>7,140</b>	<b>6,837</b>	<b>303</b>	<b>5.7%</b>	<b>6.1%</b>	<b>-3.5%</b>

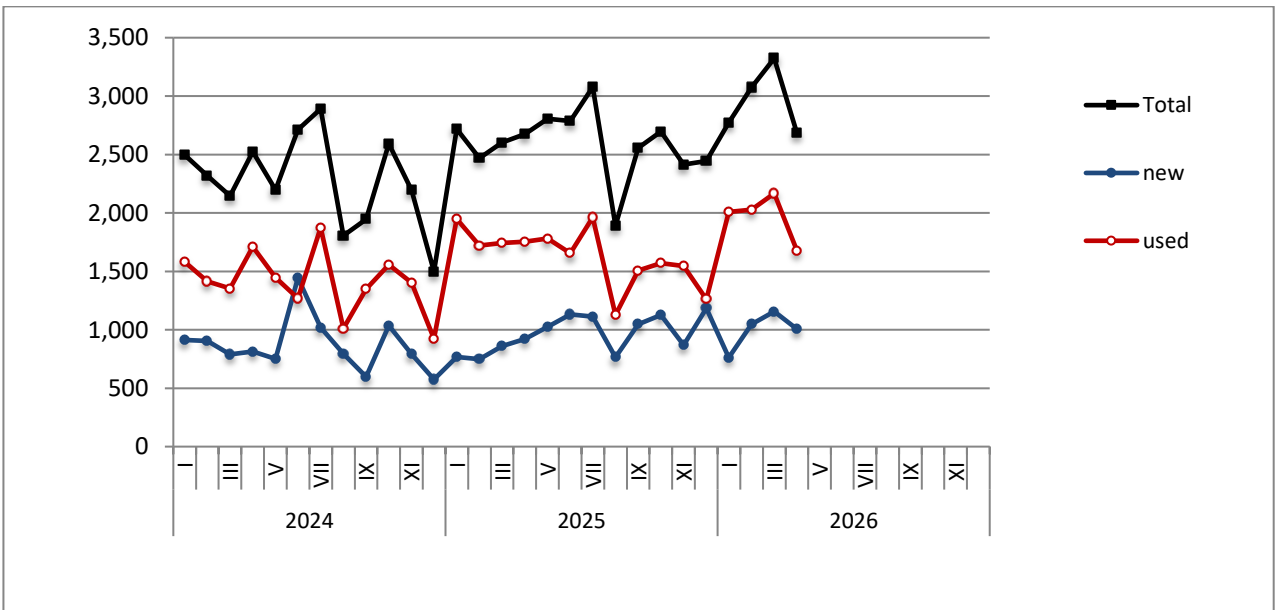
**Graph 1: Passenger Cars (January 2024 – April 2026)**



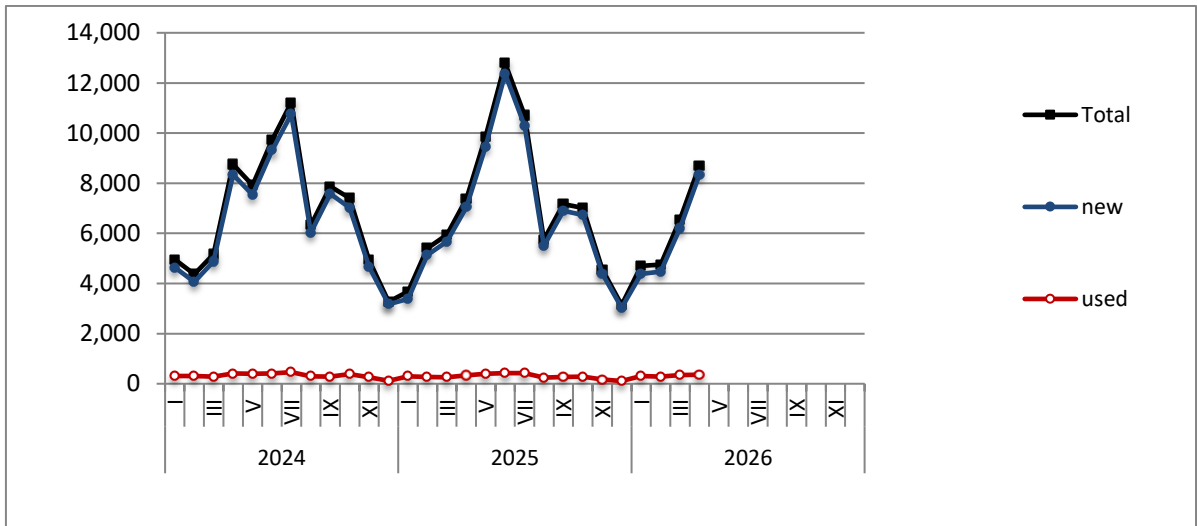
**Graph 2: Buses (January 2024 – April 2026)**



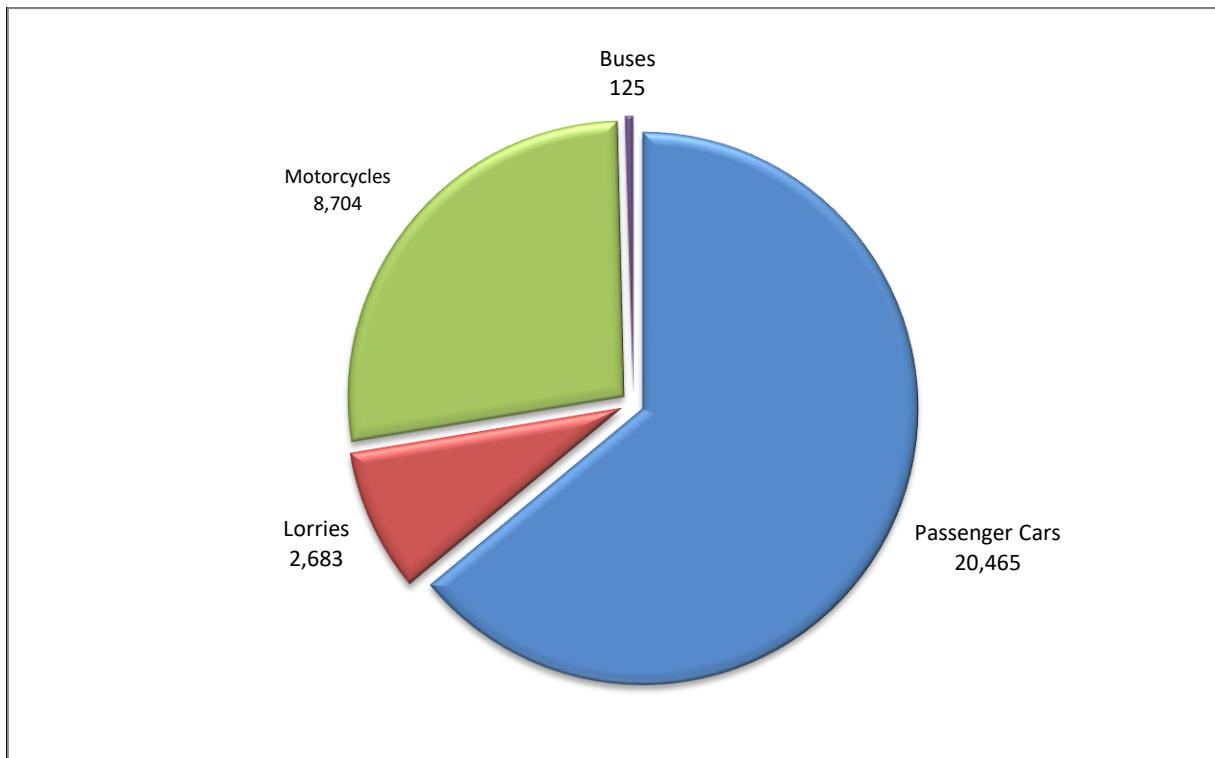
**Graph 3: Lorries (January 2024 – April 2026)**



**Graph 4: Motorcycles (January 2024 – April 2026)**



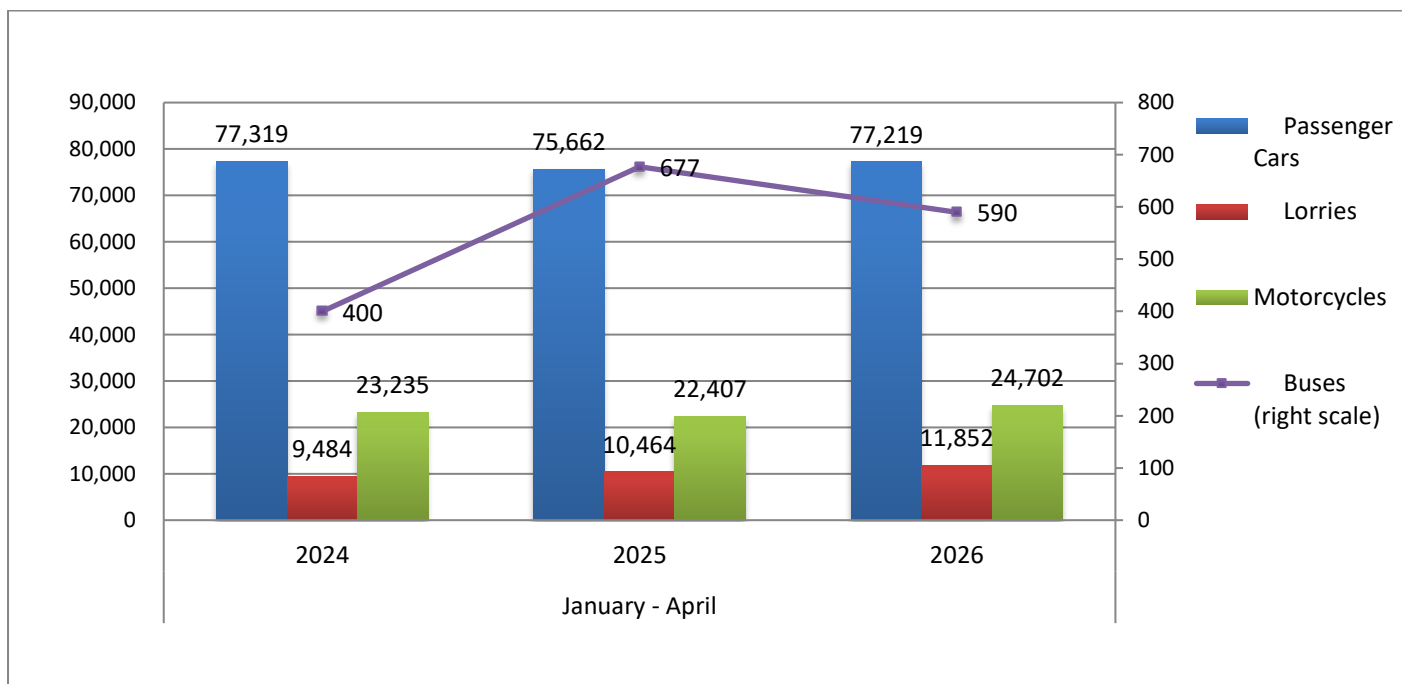
**Graph 5: New Registrations of Motor Vehicles (April 2026)**



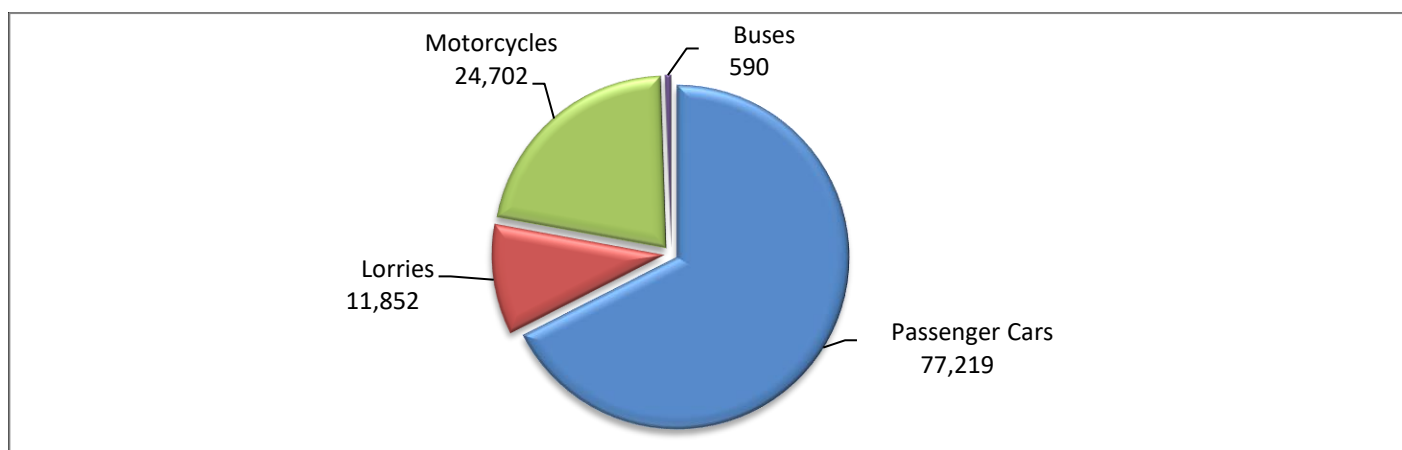
**Table 3. Road motor vehicles, both new and used, put into circulation for the first time in Greece: January - April, years 2024 till 2026**

Category of Road Motor Vehicles	January - April									Change (%)					
	2024			2025			2026			2025/2024			2026/2025		
	Total	New	Used	Total	New	Used	Total	New	Used	Total	New	Used	Total	New	Used
<b>Greece, total</b>															
Road Motor Vehicles, total	110,438	75,631	34,807	109,210	72,693	36,517	114,363	76,383	37,980	-1.1%	-3.9%	4.9%	4.7%	5.1%	4.0%
1. Road motor cars	87,203	53,714	33,489	86,803	51,457	35,346	89,661	52,992	36,669	-0.5%	-4.2%	5.5%	3.3%	3.0%	3.7%
Passenger Cars	77,319	50,136	27,183	75,662	47,809	27,853	77,219	48,697	28,522	-2.1%	-4.6%	2.5%	2.1%	1.9%	2.4%
Buses	400	155	245	677	353	324	590	323	267	69.3%	127.7%	32.2%	-12.9%	-8.5%	-17.6%
Lorries	9,484	3,423	6,061	10,464	3,295	7,169	11,852	3,972	7,880	10.3%	-3.7%	18.3%	13.3%	20.5%	9.9%
2. Motorcycles > 50 cc	23,235	21,917	1,318	22,407	21,236	1,171	24,702	23,391	1,311	-3.6%	-3.1%	-11.2%	10.2%	10.1%	12.0%
<b>Prefecture of Attica</b>															
Road Motor Vehicles, total	60,997	47,450	13,547	60,827	47,596	13,231	64,904	50,964	13,940	-0.3%	0.3%	-2.3%	6.7%	7.1%	5.4%
1. Road motor cars	49,595	36,411	13,184	49,592	36,731	12,861	52,516	38,917	13,599	0.0%	0.9%	-2.4%	5.9%	6.0%	5.7%
Passenger Cars	45,761	34,323	11,438	45,252	34,425	10,827	47,572	36,129	11,443	-1.1%	0.3%	-5.3%	5.1%	4.9%	5.7%
Buses	240	120	120	391	249	142	324	227	97	62.9%	107.5%	18.3%	-17.1%	-8.8%	-31.7%
Lorries	3,594	1,968	1,626	3,949	2,057	1,892	4,620	2,561	2,059	9.9%	4.5%	16.4%	17.0%	24.5%	8.8%
2. Motorcycles >50 cc	11,402	11,039	363	11,235	10,865	370	12,388	12,047	341	-1.5%	-1.6%	1.9%	10.3%	10.9%	-7.8%

**Graph 6. New Motor Vehicles Circulation Licenses: January – April, years 2024 till 2026**



**Graph 7. New Registrations of Motor Vehicles: January – April 2026**



**Table 4**  
**Sales of new and used passenger cars by make: April 2026 and January - April 2026**

Make	Passenger cars			
	April		January - April	
	new	used	new	used
ABARTH	-	1	-	1
ADRIA	-	1	-	2
ALFA ROMEO	31	22	263	123
ALPINA	-	-	1	1
ALPINE	-	-	-	2
ARCA	1	-	1	-
ASTON MARTIN	-	1	-	6
AUDI	241	135	1,477	583
BENTLEY	-	1	3	4
BMW	508	192	2,310	960
BURSTNER	-	3	-	7
BYD	218	1	964	2
CADILLAC	-	1	-	1
CAPRON	-	-	2	6
CARTHAGO	-	-	-	1
CHAUSSON	-	-	-	1
CHERY	93	-	265	-
CHERY, EBRO	311	-	1,008	-
CHERY, EXEED, FOWNIX, CHIREY, CHERY EXEED, OMODA	1	-	10	-
CHERY, OMODA	27	-	83	-
CHEVROLET	-	1	-	19
CHEVROLET, GMC, HOLDEN, DAEWOO	-	-	-	4
CITROEN	679	346	3,206	1,499
CITROEN / DS	-	170	4	674
CUPRA	75	6	373	29
DACIA	721	134	2,326	656
DAIHATSU	-	1	-	2
DEEPAL	20	-	52	-
DEEPAL, CHANGAN	2	-	12	-
DETHLEFFS	-	-	-	5
DFSK, SERES, SOKON, FENGON	14	-	29	-
DODGE	-	-	-	1
DONGFENG	1	-	8	-
DS	15	14	53	85
E-GO	-	-	-	1
EXEED, CHERY EXEED, OMODA, EXLANTIX, XTRIM, JAECOO	67	-	103	-
FERRARI	2	2	3	9
FIAT	537	206	1,244	958
FORD	241	412	859	2,014
FORD <sup>2</sup>	-	-	-	1
GAC, AION	14	-	45	-
GEELY	45	-	120	-
GLOBE TRAVELLER	-	-	-	1
HONDA	32	44	125	240
HYMER	-	1	1	3
HYUNDAI	759	549	2,528	2,484
IMPREZA	-	-	-	1
INEOS	-	1	-	2

**Table 4 (cont)**  
**Sales of new and used passenger cars by make: April 2026 and January - April 2026**

Make	Passenger cars			
	April		January - April	
	new	used	new	used
IVECO S.P.A / LAIKA CARAVANS	-	-	-	1
JAECOO, OMODA, CHERY, FOWNIX, LUCANO	21	-	103	-
JAGUAR	-	21	1	86
JEEP	203	65	743	311
KERABOSS	1	-	3	-
KIA	839	120	1,638	556
KNAUS	-	2	-	9
LADA	-	2	-	6
LAIKA CARAVANS	1	-	1	2
LAMBORGHINI	1	3	4	5
LANCIA	-	3	-	9
LAND ROVER	50	65	172	309
LEAPMOTOR	30	-	92	-
LEXUS	41	2	199	11
LINCOLN	-	-	-	1
LMC	-	-	-	1
LOTUS	-	-	1	-
LYNK&CO	13	2	33	15
MASERATI	2	5	8	12
MAZDA	62	20	217	137
MC LOUIS SPA	-	1	-	1
MCLAREN	-	1	-	1
MERCEDES	167	643	615	2,704
MERCEDES <sup>1</sup>	-	-	2	-
MERCEDES <sup>2</sup>	-	-	1	-
MG	4	1	29	7
MG, ROEWE	319	8	1,379	23
MINI	203	52	875	179
MITSUBISHI	8	66	18	357
MOBILVETTA DESIGN SpA	-	-	-	3
MOKE	-	-	2	-
NIO	1	-	28	-
NISSAN	213	411	1,723	1,818
NISSAN <sup>1</sup>	1	-	4	-
OPEL	970	368	3,470	1,735
PEUGEOT	1,493	812	4,177	3,293
PEUGEOT <sup>2</sup>	4	-	5	-
PLA	-	-	-	1
POESSL	-	-	-	1
PORSCHE	18	59	79	244
POSSL	-	-	-	1
PSA AUTOMOBILES	-	-	-	2
RANGE ROVER	2	3	2	21
RENAULT	546	451	2,001	2,098

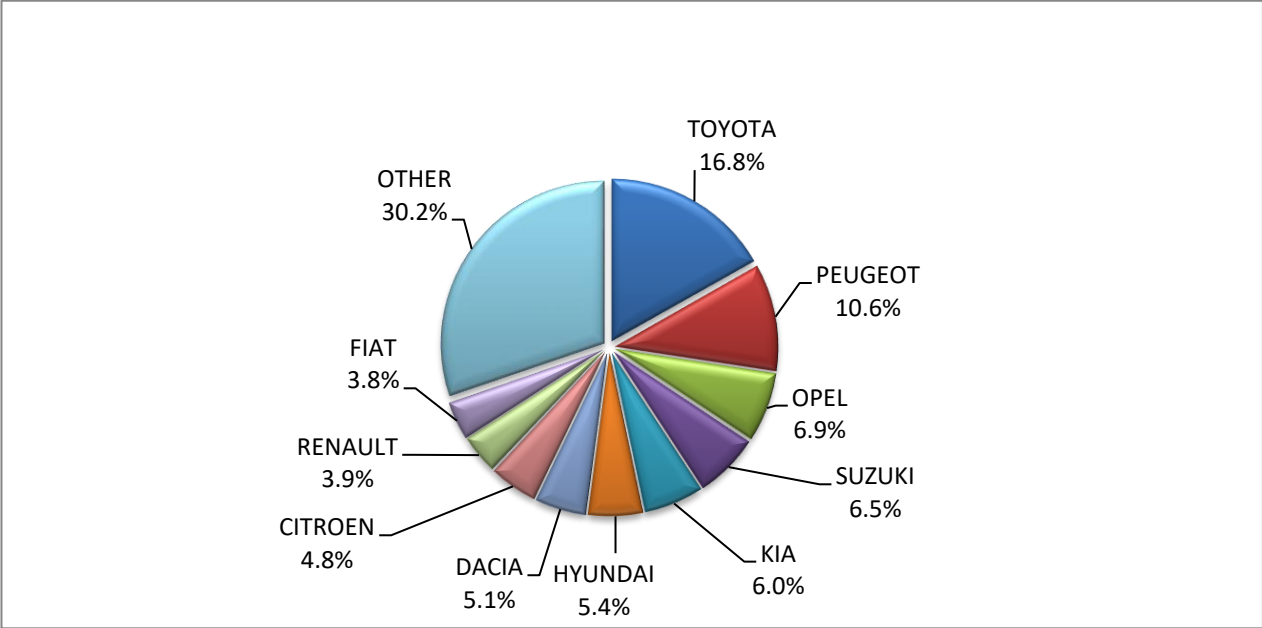
**Table 4 (cont)**  
**Sales of new and used passenger cars by make: April 2026 and January - April 2026**

Make	Passenger cars			
	April		January - April	
	new	used	new	used
ROLLS ROYCE	-	2	-	2
SEAT	84	49	387	196
SKODA	345	92	926	324
SMART	9	83	25	357
SRM, SWM, SHINERAY, KMC	-	-	7	-
SSANGYONG	-	2	-	4
SSANGYONG, KG MOBILITY	5	-	66	-
SUBARU	6	8	24	35
SUZUKI	909	108	2,786	486
TESLA	9	15	317	52
TOYOTA	2,363	369	7,241	1,648
TRIGANO	-	-	-	3
VOLKSWAGEN	371	210	1,352	974
VOLVO	94	24	379	93
VOYAH	-	-	5	-
XPENG	3	-	41	-
ZEEKR	2	-	17	-
ZEEKR, GEELY	4	-	21	-
<b>TOTAL</b>	<b>14,072</b>	<b>6,393</b>	<b>48,697</b>	<b>28,522</b>

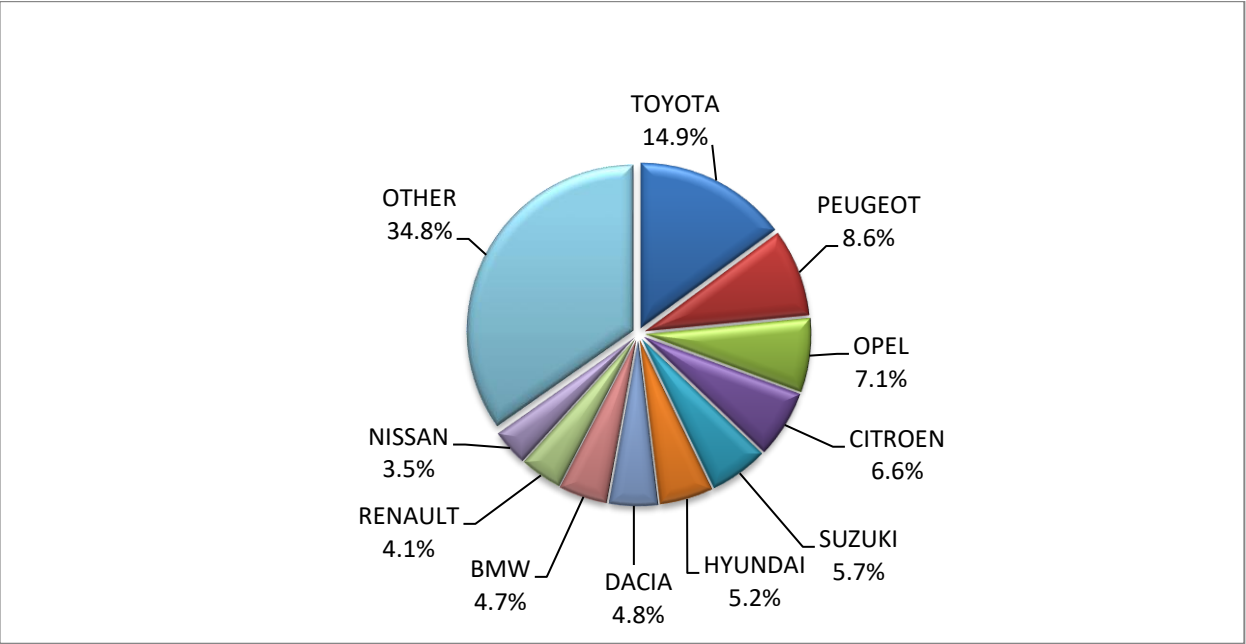
**1 : With 2nd/3rd stage manufacturer in Greece.**

**2 : With 2nd/3rd stage manufacturer abroad.**

**Graph 8. Sales of new passenger cars by make (April 2026)**



**Graph 9. Sales of new passenger cars by make (January – April 2026)**



**Table 5**  
**Sales of new and used lorries by make: April 2026 and January - April 2026**

Make	Lorries			
	April		January - April	
	new	used	new	used
ADDAX MOTORS, ISEKI, STAMA	2	-	2	-
BMC Otomotiv Sanayi ve Ticaret A.Ş. <sup>1</sup>	-	-	1	-
BYD	27	-	31	3
CHRYSLER	-	-	-	1
CITROEN	17	51	239	265
DACIA	-	4	2	26
DAF	2	65	8	274
DAF <sup>1</sup>	4	-	6	-
DAF <sup>2</sup>	-	-	2	-
DAIHATSU	-	-	-	1
DODGE	-	-	-	5
DR MOTOR	-	-	-	1
ESAGONO ENERGIA	-	-	2	-
EVUM MOTORS	-	-	2	-
FARIZON	1	-	2	-
FARIZON, LEVC	7	-	12	-
FCA US LLC	-	1	-	7
FEIDI	2	-	5	1
FIAT	71	100	305	479
FIAT-IVECO	-	1	-	8
FORD	134	287	620	1,450
FORD <sup>1</sup>	25	1	56	4
FORD <sup>2</sup>	1	-	7	-
FOTON	19	-	31	-
FUSO	-	-	-	6
HUMBAUR GMBH	-	-	-	1
HYUNDAI	-	-	-	5
ISUZU	27	5	173	73
ISUZU <sup>1</sup>	-	-	3	-
IVECO	-	51	5	176
IVECO <sup>1</sup>	-	-	5	1
IVECO <sup>2</sup>	-	-	-	1
IVECO MAGIRUS	-	-	-	3
IZUZU	-	9	-	9
JEEP	-	4	-	9
KERSTNER	-	1	-	1
KIA	1	1	1	3
LAMAR-FCA ITALY FIAT DUCATO	-	-	-	1
LAND ROVER	-	2	2	4
LEVC	-	-	-	1
MAN	1	123	15	528
MAN <sup>2</sup>	-	-	17	-
MAN <sup>1</sup>	3	-	10	-

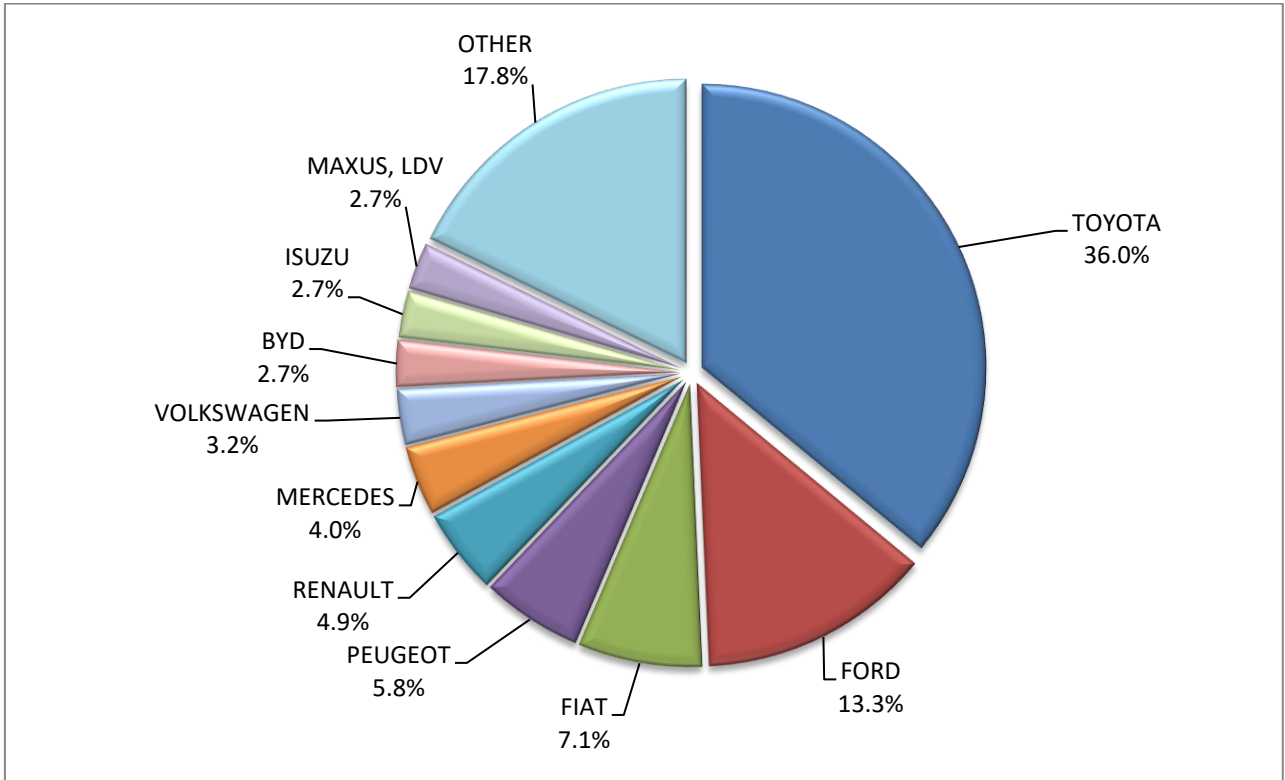
**Table 5 (cont)**  
**Sales of new and used lorries by make: April 2026 and January - April 2026**

Make	Lorries			
	April		January - April	
	new	used	new	used
MAXUS	1	-	2	-
MAXUS, LDV	27	3	63	6
MAZDA	-	-	-	2
MERCEDES	40	423	100	1,834
MERCEDES <sup>1</sup>	6	-	13	8
MERCEDES <sup>2</sup>	-	-	5	1
mitsubishi	-	25	-	140
MITSUBISHI <sup>1</sup>	-	-	2	3
MITSUBISHI FUSO	-	3	2	17
MITSUBISHI FUSO <sup>1</sup>	2	-	10	1
MITSUBISHI FUSO <sup>2</sup>	2	-	6	2
NISSAN	9	47	13	221
NISSAN <sup>2</sup>	-	-	-	1
OAF	-	-	-	2
OPEL	25	58	134	289
PEUGEOT	58	58	285	284
PFAU	-	-	-	3
PIAGGIO	-	2	-	10
PIAGGIO <sup>1</sup>	5	-	6	-
PIAGGIO <sup>2</sup>	-	-	2	-
RAM	-	-	-	1
RENAULT	49	101	169	499
RENAULT <sup>1</sup>	-	-	1	-
SAXAS	-	1	-	2
SCANIA	7	48	30	257
SKODA	-	1	-	1
SPIER	-	-	-	1
SSANGYONG, KG MOBILITY	18	-	52	-
STX	-	-	-	1
SUZUKI	-	-	-	1
TOYOTA	362	50	1,252	246
TOYOTA <sup>1</sup>	-	-	12	-
VICTORY	6	-	11	-
VOLKSWAGEN	32	55	195	273
VOLVO	13	96	38	427
VOLVO <sup>1</sup>	-	-	5	-
<b>TOTAL</b>	<b>1,006</b>	<b>1,677</b>	<b>3,972</b>	<b>7,880</b>

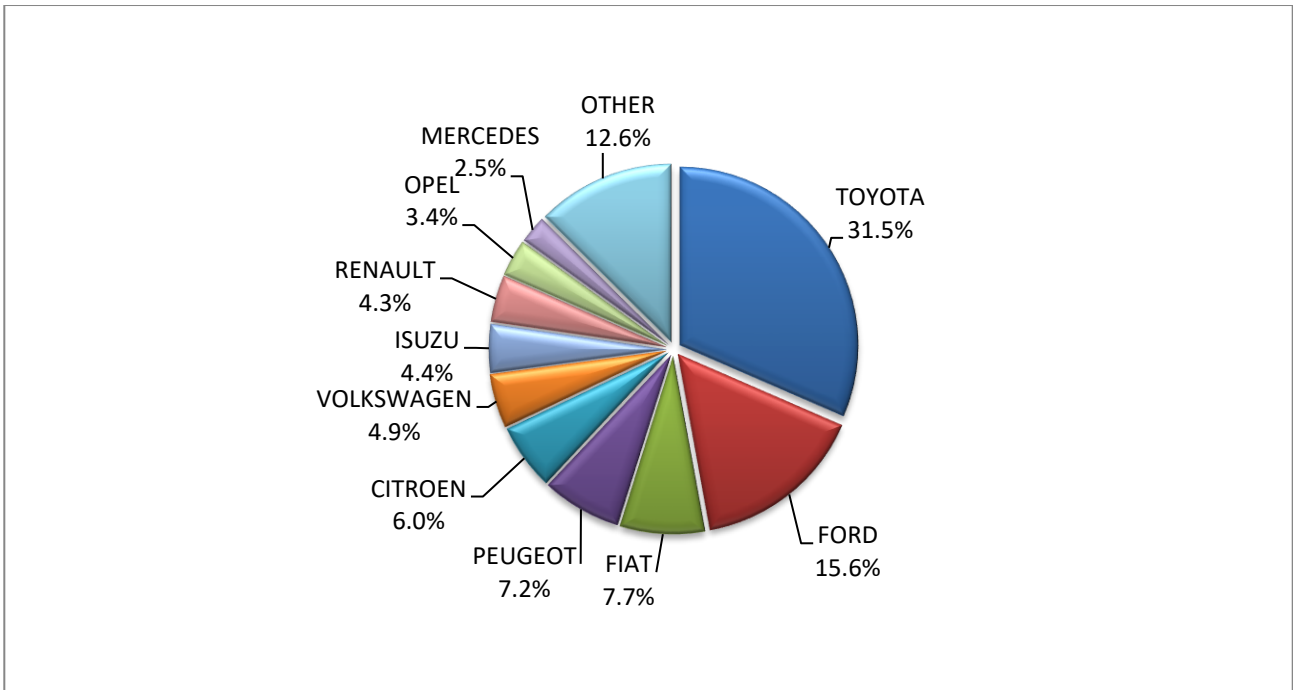
**1 : With 2nd/3rd stage manufacturer in Greece.**

**2 : With 2nd/3rd stage manufacturer abroad.**

**Graph 10. Sales of new lorries by make (April 2026)**



**Graph 11. Sales of new lorries by make (January – April 2026)**



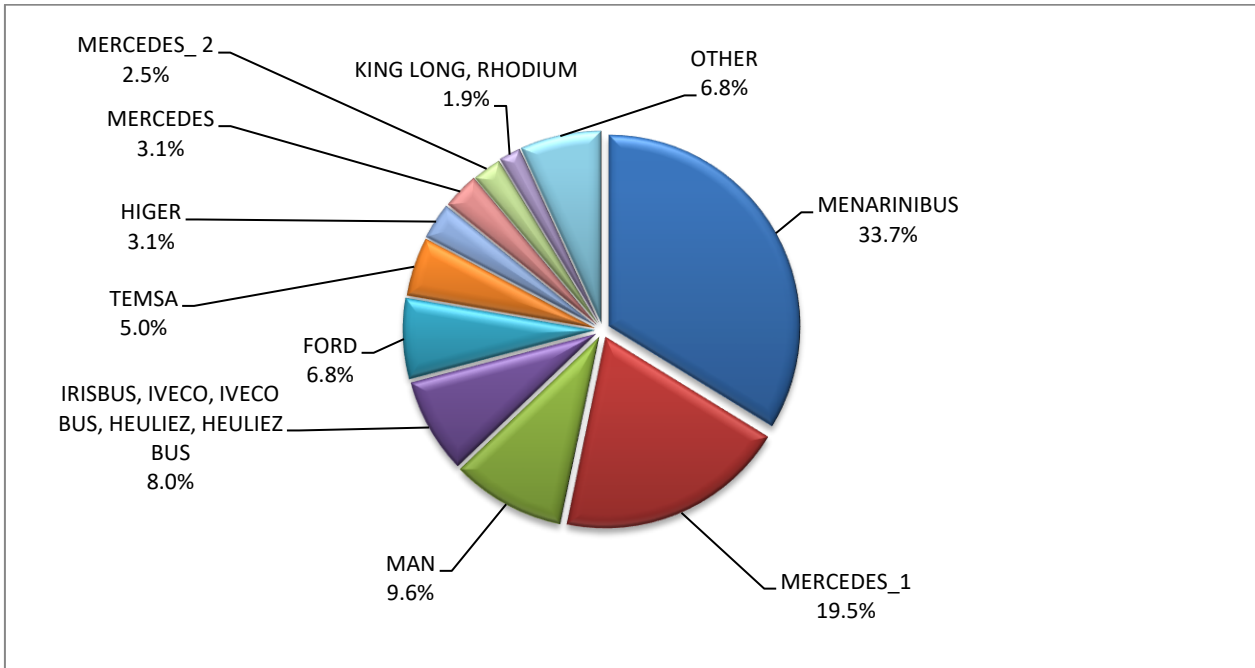
**Table 6**  
**Sales of new and used buses by make: April 2026 and January - April 2026**

Make	Buses			
	April		January - April	
	new	used	new	used
BOVA	-	3	-	17
EVOBUS	-	-	-	1
FORD	7	1	22	10
GRANTON, BAZN, GOLDION	-	-	2	-
HIGER	-	-	10	-
IRISBUS	-	-	-	1
IRISBUS, IVECO, IVECO BUS, HEULIEZ, HEULIEZ BUS	-	-	26	-
ISUZU	-	1	-	4
ISUZU, AOS, GLOBUS, AIOS	1	-	2	-
IVECO	-	1	-	3
IVEKO 2	-	-	1	-
KARSAN	3	-	5	-
KING LONG, RHODIUM	3	-	6	-
MAN	12	2	31	18
MAN/NEOPLAN	-	1	-	2
MENARINIBUS	-	-	109	-
MERCEDES	2	47	10	143
MERCEDES 1	13	-	63	-
MERCEDES 2	1	1	8	2
NEOPLAN	-	5	5	8
OTOKAR	1	1	1	3
RAMPINI	3	-	3	-
SCANIA	-	-	-	1
SCANIA 2	1	-	2	1
SETRA	-	5	1	26
TEMSA	5	3	16	17
VAN HOOL	-	-	-	4
VOLVO	-	-	-	2
XIAMEN KING LONG	-	2	-	4
<b>TOTAL</b>	<b>52</b>	<b>73</b>	<b>323</b>	<b>267</b>

**1 : With 2nd/3rd stage manufacturer in Greece.**

**2 : With 2nd/3rd stage manufacturer abroad.**

**Graph 12. Sales of new buses by make (January – April 2026)**



**Table 7  
Sales of new and used motorcycles by make or manufacturer: April 2026 and January - April 2026**

Make	Motorcycles			
	April		January - April	
	new	used	new	used
APRILIA	72	1	192	9
ARIIC, JINLANG, KEEWAY, ARORA, KL, UM	7	-	21	-
ASUS, Joyrace, Maxon, Gineva Moto, Berini, ROMET MOTORS, ROUTER, ZIPP, TOROS, LuXXon, Motobi, Rivero	14	-	44	-
ASUS, YUKI, RATO, DOCKER, MIGLIORI, VICTORY, AVETA	-	-	2	-
BAJAJ	4	-	6	-
BASHAN, AMGroup, AMGroup Bike, DON, IRBIS, WORKER BEAR, Nomik ATV 2	2	-	4	-
BAW, NIEVE, RELIVE, ALLVIEW, Yunlong Motors	4	-	9	-
BENDA	12	-	12	1
BENELLI	28	1	61	3
BENSEL	-	-	-	1
BETA	8	-	37	7
BIMOTA	-	-	1	-
BMW	136	49	394	199
BOMBARDIER RECREATIONAL PRODUCTS ING (BRP)	-	3	-	5
BONTU, BENTU	4	-	18	-
BRIXTON	5	-	18	-
BRP	-	-	1	-
BUELL	-	1	-	1
CFMOTO	477	1	1,155	2
CFMOTO, WHITE KNUCKLE, MONDIAL, JUNAK	-	-	-	1
CFMOTO, ZEEHO	21	-	50	-
DAELIM	-	1	-	1

**Table 7 (cont)**

**Sales of new and used motorcycles by make or manufacturer: April 2026 and January - April 2026**

Make	Motorcycles			
	April		January - April	
	new	used	new	used
DAYANG, DAYTONA MOTORS, NIPPONIA, DYMOTO, VEEROAD, EVO MOTORS, MH MOTORCYCLES, FKM, FKMOTORS	-	-	6	-
DAYANG, DAYTONA MOTORS, NIPPONIA, KUBA, VEEROAD, SUMCO, CETUR, RUTEC	21	-	113	-
DAYANG, DAYTONA MOTORS, NIPPONIA, VEEROAD, DOCKER, RKS, LUOJIA	22	-	62	-
DAYANG, DAYTONA MOTORS, NIPPONIA, VEEROAD, RUTEC, CETUR, SALCANO, LUOJIA, GA CE LA, HIGHLAND, NORTH	103	-	406	-
DAYANG, DYMOTO, DAYTONA MOTORS, NIPPONIA, MH MOTORCYCLES, ORCAL, SUMCO	29	-	58	-
DAYANG, DYMOTO, DAYTONA MOTORS, NIPPONIA, MH MOTORCYCLES, ORCAL, SUMCO, KUBA, RKS, RUTEC, AJS	24	-	72	-
DAYTONA MOTORS, DAYANG, DYMOTO, NIPPONIA, MH MOTORCYCLES, ORCAL, SUMCO, RUTEC, AJS	-	-	1	-
DAYTONA MOTORS, DAYANG, NIPPONIA, DYMOTO, DOCKER, VEEROAD, EVO MOTORS, SUMCO, CETUR, HANSOM, RUTEC	1	-	1	-
DERBI	-	1	-	1
DONGBEN, GANCIN, DIRONG, KRAL	1	-	8	-
DOOHAN, TRINITY, PINK, DOUHA, CECOTEC	9	-	12	-
DUCATI	22	7	47	42
E.F.O, GOLDEN LION, SAKURA, ARTISAN, Fauro,ETALIAN, BOLIDE, LINZE, DREEMS e-mobilities, BAïKU, AJS	1	-	1	-
EAGLE	-	-	-	1
EASYCOOL, HECHHI, HURBA, Mitt, Blu:s, Luxxon, ROMET, VORTEX By Gingabike	-	-	1	-
ECOSHIFT	4	-	205	-
EFUN, ZAP	2	-	3	-
EFUN, ZAP, FRISON, easy-watts	7	-	17	-
EMBUGGY, EVANGEL, The Original BeachBuggy, Beach Buggy	12	-	15	-
ERIDE ELECTROMOBILITY, BEEV, YUNLONG MOTORS, EasyFleet, Pacta Car, DESNER, WANERS, MAXVIEW	1	-	2	-
FANTIC MOTOR	2	-	2	-
FB,KL,TNT,MALAGUTI,KEEWAY,ZF-KY,TG,TNT MOTOR,F.B Mondial-10 VOLTE CAMPIONE DEL MONDO (figurativo)	-	-	1	-
GAS GAS	1	2	4	4
GILERA, PIAGGIO	-	1	-	2
GOCCIA, E-ZI, AGM, SFM, VGA, SACHS, SAXXX, KEEWAY, Vengo, Viarelli, EZI, E ZI	3	-	5	-
GOLDEN LION, SAKURA, ARTISAN, ETALIAN, E- mio, Fauro, Kito, Varaneo, Viverra, E.F.O, BOLID	1	-	1	-
GOUPIL, MEGA, POLARIS, GEM	5	-	6	-
GPX	-	-	2	-
HAOJIN, KUBA, RKS, SKYJET, LETBE, AJS	1	-	3	-
HAOJIN, LETBE, KUBA, RKS, SKYJET	9	-	34	-
HARLEY DAVIDSON	4	19	19	84
HONDA	1,375	57	4,305	219
HORWIN	2	-	2	-
HUSQVARNA	3	11	21	29
HYOSUNG	1	-	1	-
INDIAN MOTORCYCLE	4	-	13	-
ITALJET	6	-	6	-
JAWA	3	-	3	-
JHEJIANG FUXIN	-	1	-	1
JIAJUE, Joyrace, MAXON, Gineva Moto, ASUS, TURBHO, BTC, AGM, ROMET MOTORS,	36	-	126	-

Table 7 (cont)

Sales of new and used motorcycles by make or manufacturer: April 2026 and January - April 2026

Make	Motorcycles			
	April		January - April	
	new	used	new	used
ROUTER, ZIPP, TOROS				
JNEN, JUNENG, ZIPP, MOTORAN, HORS, FLEX TECH, ALPHA-MOBIL, ROUTER, PEDA MOTOR, PEDA, APACHI, ARORA	20	-	47	-
JNEN, JUNENG, ZIPP, MOTORAN, HORS, FLEX TECH, RAZZO, TOROS, ONE, JUNAK	5	-	6	-
JNEN, JUNENG, ZIPP, MOTORAN, ONE, RAZZO, FLEX TECH, TOROS, JUNAK, TURBHO, PEZAL, ALPHA-MOBIL	10	-	41	-
JNEN, JUNENG, ZIPP, MOTORAN, PUZEY, ALPHA-MOBIL, HORS, ROMET, JST, JMT, PEDA MOTOR, PEDA, APACHI	6	-	28	-
JONWAY, JMSTAR, SHENKE, HUIBANG	-	-	1	-
KAMAX	1	-	2	-
KAWASAKI	44	7	93	27
KEEWAY	23	-	56	-
KEEWAY, JINLANG, ARIIC, ARORA, KL	3	-	5	-
KEEWAY, KUBA	1	-	2	-
KEEWAY, LONGJIA	1	-	2	-
KEEWAY, ORCAL, NECO, ALFASCOOTERS	4	-	20	-
KEEWAY, RKS	4	-	14	-
KEEWAY, RKS, KUBA, SKYJET	3	-	9	-
KEEWAY, RKS, KUBA, SKYJET, STELS, MORBIDELLI	23	-	62	-
KTM	64	43	174	123
KUBA, RKS, SKYJET, LETBE	2	-	9	-
KYMCO	113	23	289	91
LEIMO, ZF-KY, HUAWIN, ARORA, MOJITO	-	-	1	-
LETBE, HAOJIN, KUBA, RKS, SKYJET, RKS LETBE	41	-	82	-
LETBE, RKS, RKS LETBE, HAOJIN, KUBA, SKYJET	36	-	73	-
LEXMOTO, ROMET, NECO, LUXXON, PRIKE, MAXON	102	-	210	-
LIFAN, QIPAI, SKYGO, TAKTAS, TAKTAS MOTOR	4	-	27	-
LIVEWIRE	-	-	1	-
LOJO, RAINWOLL	1	-	2	-
LONCIN, KINLON, LONGTING, KUBA, YUKI, MONDIAL, STMAX, KANUNI, MOTORAN, ASYA, QUSWA, PUMAREX, RALLY USA, MOD, CCM	37	-	38	-
LONCIN, KUBA, RKS, ITALIKA, SUNRACE, SKY, MALAGUTI, SUPERBIKE, ROCKET, NOVELBAT, TIGERMOTO, GREEN	5	1	9	1
LONCIN, VOGÉ	59	-	79	-
LONCIN, VOGÉ, KUBA, RKS, ITALIKA, SUNRACE, SKY, MALAGUTI, SUPERBIKE, ROCKET, NOVELBAT, TIGREMOTO, GREEN	-	-	-	1
LONCIN, VOGÉ, VOGÉPRO	146	-	501	-
LONGJIA, ORCAL, NECO, ALFASCOOTERS, VGA, ROMET MOTORS, BARTON MOTORS, OVER, CAROLYN, KANUNI, BTC	17	-	33	-
LONGJIA, ORCAL, NECO, VGA, ROMET MOTORS, DRAX, MONDIAL, JUNAK, ONLINE, MOTOWeLL, JORDON, GABELLI	26	-	94	-
LONGJIA, VICTORIA, VICTORIA MOTORRAD, ORCAL, NECO, VGA, BTC, ALFASCOOTERS	83	-	288	-
LONGJIA, Zündapp, VGA, NECO, BTC, AGM, ALFASCOOTERS, ROMET MOTORS, Kudaki, BARTON MOTORS, OVER BIKES	3	-	10	-
LVNENG	-	-	4	-
MACBOR, COLOVE, DAYTONA MOTORS, ZF-KY, KOVE	11	-	29	-
MACBOR, COLOVE, DAYTONA MOTORS, ZF-KY, online, KOVE	36	-	100	-
MALAGUTI	61	-	134	-
MARSHELL	1	-	1	-
MBK	-	1	-	1
MBP, MORBIDELLI, KEEWAY, KUBA, RKS, STELS	2	-	22	-

Table 7 (cont)

## Sales of new and used motorcycles by make or manufacturer: April 2026 and January - April 2026

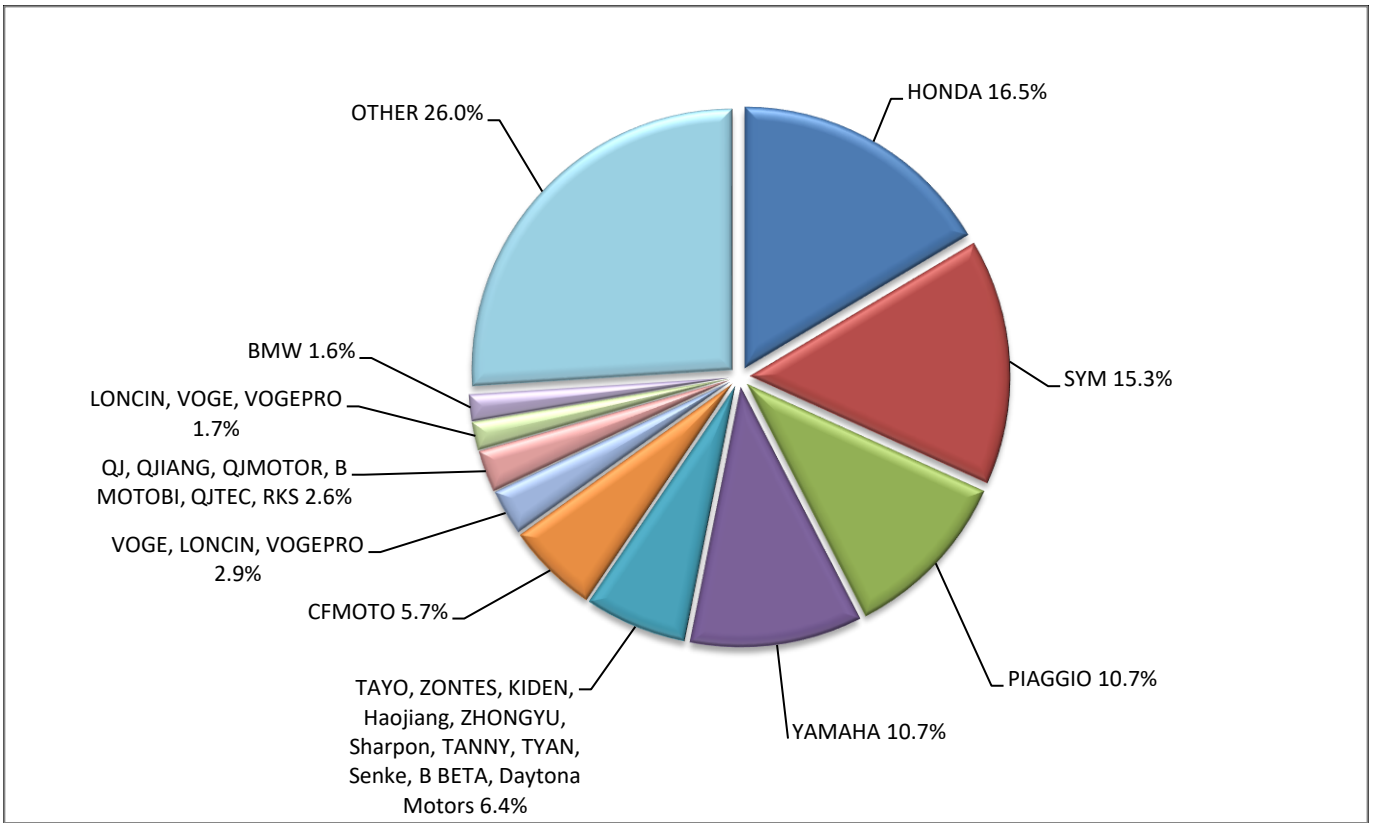
Make	Motorcycles			
	April		January - April	
	new	used	new	used
MGK HM	58	-	201	-
MICRO	-	-	1	1
MODENAS	-	-	-	1
MONDIAL, PELPI INTERNATIONAL	-	1	-	1
MORBIDELLI, KEEWAY, MBP, STELS, RKS	34	-	101	-
MOTO GUZZI	18	1	47	2
MOTO MORINI	7	-	20	1
MOTRON MOTORRAD, ZONGSHEN	-	-	1	-
MURTAS, VELIMOTOR, RONGJUE, PINK, BR SPORT, INVICTA ELECTRIC	-	-	1	-
MV AGUSTA	-	-	1	3
NERVA	2	-	2	-
ODES	-	-	2	-
PEUGEOT	26	1	74	3
PIAGGIO	895	36	2,388	96
PILOTCAR	1	-	3	-
POLARIS	4	1	7	1
QJ, QJIANG, QJMOTOR, B MOTObI, QJTEC, LIFAN, GTS, DAYTONA MOTORS, SIMONINI MOTO, PINK, RKS	10	-	14	-
QJ, QJIANG, QJMOTOR, B MOTObI, QJTEC, RKS	216	1	727	1
QJ, QJMOTOR, B MOTObI, QJTEC, RKS, KUBA, SKYJET	30	-	94	-
RATO, YUKI, ASUS, DOCKER, MIGLIORI, VICTORY, AVETA, ALTAI, KUBA, RKS, BRIXTON MOTORCYCLES	16	-	54	-
RATO, ALTAI, MIGLIORI, DOCKER, ASUS, AVETA, BRIXTON MOTORCYCLES, KUBA, RKS, GENERIC, LAMBDA MOTORCYCLES,	104	-	280	-
REDMOTO	-	-	3	1
REGIS MOTORS	-	-	4	-
RENLI, ORION	7	-	14	-
RIDE	-	-	-	1
RIEJU	5	-	36	-
RIYA, RYMOTO, KUBA, Lexmoto, MITT, ALPHA MOTORS, IMF, ROMET, ZIPP, ARORA, ZORRO, MOJITO, MASH	8	-	21	-
ROYAL ENFIELD	57	1	202	3
Royalloy, Royal Alloy, RA	1	-	3	-
SACIN, SKYTEAM, SNAKEMOTORS, CONAN, KEEWAY, MONKEY BIKES, TRITON, ROMET, ZIPP, SUMCO, BLUROC MOTORCYCLES	3	-	9	-
SAIGE, STMAX, YUKI, KRAL, JPN, Mytos Motorcycles, VIKEBIKE	-	-	1	-
SAKURA, GOLDEN LION, ARTISAN, Fauro, ETALIAN, Viverra, Varaneo, Kito, E-mio, velca, E.F.O, E-KUMA	6	-	8	-
SAM	-	-	-	1
SAN YANG	-	1	-	1
SCUTUM, ETRIX, SILENCE	-	-	1	-
SEGWAY	4	-	11	-
SHERCO	4	2	13	6
SHINERAY, SWM	5	-	8	-
SILENCE, SCUTUM, ETRIX	1	-	6	1
SKYTEAM, SACIN, CSR, METALCO, SOKUDO, BAZUKA, MINICO, MOTOSBASI, MOTOS BORDOY, SUMKO, ROXON, MONKEY BIKES	3	-	7	-
STARK	1	-	7	-
SUZUKI	106	15	269	52
SYM	1,273	2	3,715	30
TALARIA	2	-	2	-

**Table 7 (cont)**

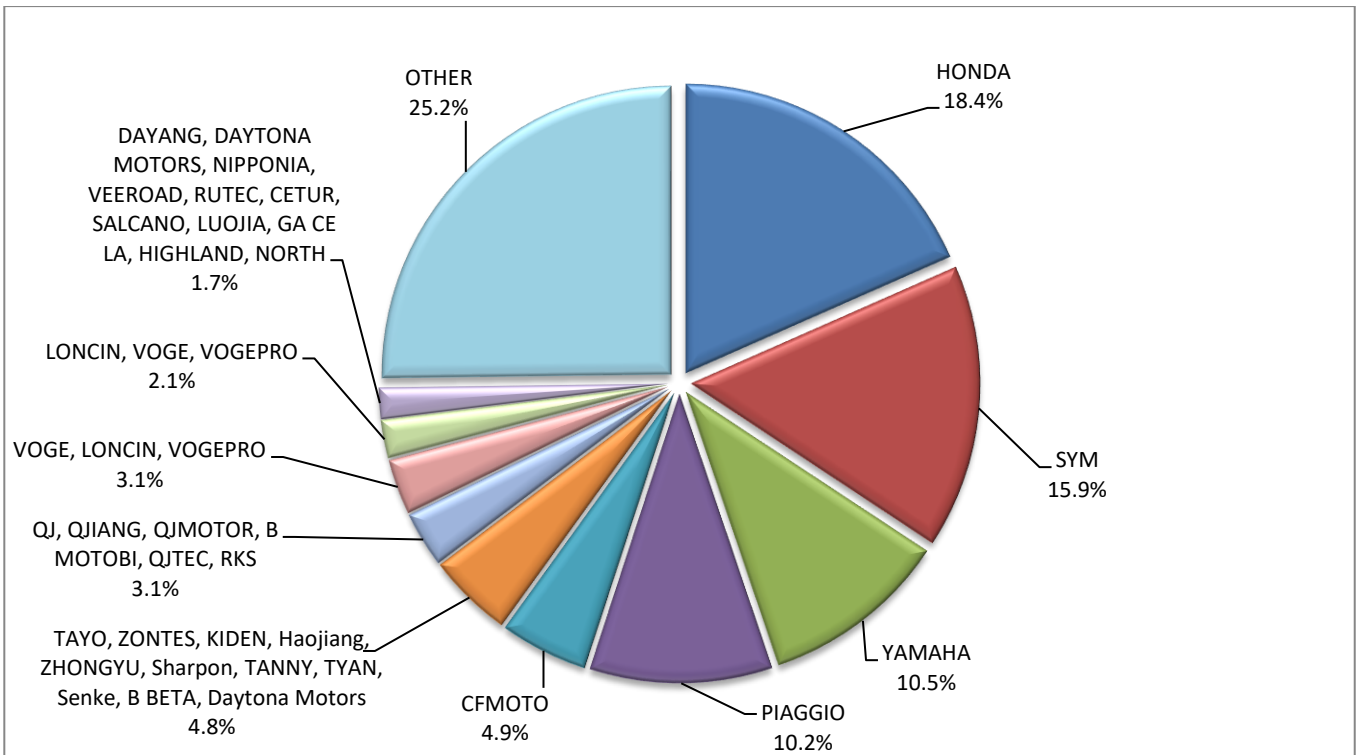
**Sales of new and used motorcycles by make or manufacturer: April 2026 and January - April 2026**

Make	Motorcycles			
	April		January - April	
	new	used	new	used
TARO, TRMOTOR, CHUANL, JUNAK, BARTON MOTORS, ORCAL, Lexmoto, MITT, NECO, WOTTAN, MAXON, MAX-ON, MOTOB	-	-	2	-
TAYO, HAOJIANG, ZHONGYU, THUMP, THUMPSTAR, KIDEN, ZONTES, Junak, SFNKF, TANNY, TYAN, ROMET	10	-	37	-
TAYO, ZONTES, KIDEN, Haojiang, ZHONGYU, Sharpon, TANNY, TYAN, Senke, B BETA, Daytona Motors	530	-	1,115	-
TAYO,HAOJIANG,ZHONGYU,THUMP,THUMPSTAR,KIDEN,ZONTES,Junak,SENKE,TANNY,TYAN,ROMET	3	-	10	-
TC-101, eBUDDY, Rino, CityArgo, RW E-TRUCK, Liddel, Butch-E, maxi van, maxi pickup, Reach, Rino, Elveon, eONE	-	-	3	-
TEYIN, TIANYING, MITT, SUMCO, RIYA, HUVE, SANBEN, TYM, APACHI, ISILAR APACHI	2	-	11	-
TEYIN, TIANYING, XINBEN, SANBEN, ALFASCOOTERS, Alpha Motors, APACHI, ARORA	4	-	11	-
TIANYING, RIYA, HONGYUNDA, TYM, HONLING, TAMCO, ALISON, DMK MOTORS, WLIE, LEEWAY, WLXQ, APGmoto	7	-	10	-
TIANYING, RIYA, SANBEN, TEYIN, TYM, Alfascooters, JORDON, YUKI, YAMASAKI	1	-	2	-
TM MOTO	-	-	1	-
TRIUMPH	49	4	147	12
TRIUNI, TRIGOBIKE, LUCKING-MOPED, CSE-EV, JSE-MOTO, RETELLI, BIKEMITE, MOBI-E, U-MOB, VELCAMOTOR, DUKKA, LUYING	1	-	2	-
TUK TUK FACTORY	-	1	-	1
UM	14	-	32	-
VELIMOTOR, VOLTAMP, ALTUX, KKL HITECH, WHEELN WATER TECH, ALTUS, NUVEAU MONDE, EN MOTO, YOUNBEE MOTORS, KKL	-	-	1	-
VELOCIFERO	1	-	3	-
VMOTO, E-MAX, FMC, CSR, ROADSIGN, KENTOYA, JINYING, GOES, VETRIX, DAO, VENGO, TELL	-	-	1	2
VMOTO-SOCO, E-MAX, VMOTO, SUPER SOCO	2	-	15	-
VOGE, LONCIN, VOGEPRO	238	-	724	-
WANGYE, SANBEN, UM, KENOS, SUPERBYKE, MDC, MISTRAL	-	-	5	-
WONJAN, THRUST MOTOR, WMOTO, KEEWAY	3	-	7	-
WUZHENG	1	-	2	-
WXEVERBRIGHT, EVERBRIGHT, VITALE	4	-	5	-
XEV, X, XEV YOYO	5	-	13	-
XIAMEN XIASHING	78	-	78	-
XINRI, SUNRA ,APACHI, ISILDAR, ISILDAR APACHI, Wayscral, KRAL	3	-	5	-
YADEA	1	-	1	-
YAMAHA	889	62	2,460	232
YUNLONG MOTORS, Pacta Car, DESNER, WANERS, MAXVIEW, Hudson, HudsonEV, MODENA	1	-	3	-
ZERO MOTORCYCLES	3	-	4	-
ZHEJIANG CFMOTO	55	-	55	-
ZHEJIANG JONWAY	1	-	1	-
ZHIDOU , ZD, RKS	1	-	11	-
ZHONGNENG, ZNEN, AGM, BTC, CLS, COLIBRI, DAYTONA MOTORS, DERRACE, DOCKER, JM MOTORS, KUBA, La souris, LEXMOTO	21	-	44	-
ZNEN	-	-	-	1
ZONGSHEN, ZONGSHENCYCLONE, ZONSEN, Lexmoto, MONDIAL, SINNIS, SPARKSTER, MACBOR, VORTEX	-	-	2	-
ZXMCO, NIJ, DAYTONA MOTORS, PINK	2	-	3	-
<b>TOTAL</b>	<b>8,344</b>	<b>360</b>	<b>23,391</b>	<b>1,311</b>

**Graph 13. Sales of new motorcycles (April 2026)**



**Graph 14. Sales of new motorcycles (January – April 2026)**



## EXPLANATORY NOTES

<b>Survey on the issuing of new road motor vehicle circulation licenses</b>	The survey on the issuing of new motor vehicle circulation licenses is a census survey. The released data give information, at country level, on the brand and type of the motor vehicle, as well as whether it is new or used. The survey does not include vehicles that move on rails, trolley busses, agricultural tractors and machinery. In addition, the following are excluded: all motor vehicles of the Armed Forces, Police, Fire Brigade, State Services, Diplomatic Corps, Foreign Missions, and Invalids of Wars, as well as motorcycles with a cylinder capacity less than 50 cc.
<b>Legal basis</b>	Law 3832/2010
<b>Reference Period</b>	April 2026
<b>Coverage</b>	The production of monthly data is based on the registers held by the Ministry of Infrastructure and Transport, which records all the monthly changes observed in the vehicle registration licenses at country level.
<b>Definitions</b>	<p><b>Road motor vehicle</b> is any vehicle that, irrespective of the number of wheels, is moved by an engine and is designed to transport persons or cargo or both of them, either they are on the same single vehicle or on a trailer carried by the main motor vehicle.</p> <p><b>New</b> road motor vehicle is any motor vehicle that is registered for the first time in Greece during the reference month and has not been put into circulation in any other country.</p> <p><b>Used</b> motor vehicle is any motor vehicle that is registered for the first time in Greece and has been imported as a used one from abroad</p> <p><b>Passenger motor vehicle:</b> it is a motor vehicle designed to carry mostly people, having no more than 9 seats, including the driver's seat.</p> <p><b>Bus:</b> it is a motor vehicle, which is designed to carry mostly people, having more than 10 seats, including the driver's seat. In the corresponding tables of this announcement, this category also includes articulated buses.</p> <p><b>Lorry:</b> it is motor vehicle designed to carry mostly cargo. In the corresponding tables of this announcement, this category also includes tractors, tow trucks, articulated tractors, and trucks with trailers.</p> <p><b>Motorcycle:</b> any two-wheeled motor vehicle, with or without sidecar, with maximum authorized design speed over 45 km/h, or in case it is powered by a combustion engine, with a cylinder capacity of 50 cc or over. In the corresponding tables of this announcement, this category also includes the three-wheeled motor vehicles – motor tricycles.</p> <p><b>Tricycle motor vehicle:</b> it is a motor vehicle with three symmetrical wheels with maximum authorized design speed over 45 km/h, or in case it is powered by a combustion engine, with a cylinder capacity over the 50 cc. This category also includes four-wheel vehicles, except the light four-wheel motorcycles, whose empty vehicle tare (excluding the weight of the fuel or mixture of fuel-oil or the weight of the batteries for electric cars) is up to 400 kg in the case the vehicle is designed for passenger use or up to 550 kg in case the vehicle is designed to carry cargo and whose engine is up to 15KW.</p>
<b>Methodology</b>	Exhaustive Survey. The primary data derive from the Ministry of Infrastructure and Transport and are based on the issuing of new circulation licenses as they are registered by the Regional Offices for Ministry of Infrastructure and Transport.
<b>References</b>	More information (graphs, tables) concerning the survey on the issuing of new motor vehicle circulation licenses are available on the webpage of ELSTAT, <a href="http://www.statistics.gr">www.statistics.gr</a> , under the link <a href="http://www.statistics.gr/en/statistics/-/publication/SME24/">http://www.statistics.gr/en/statistics/-/publication/SME24/</a>