



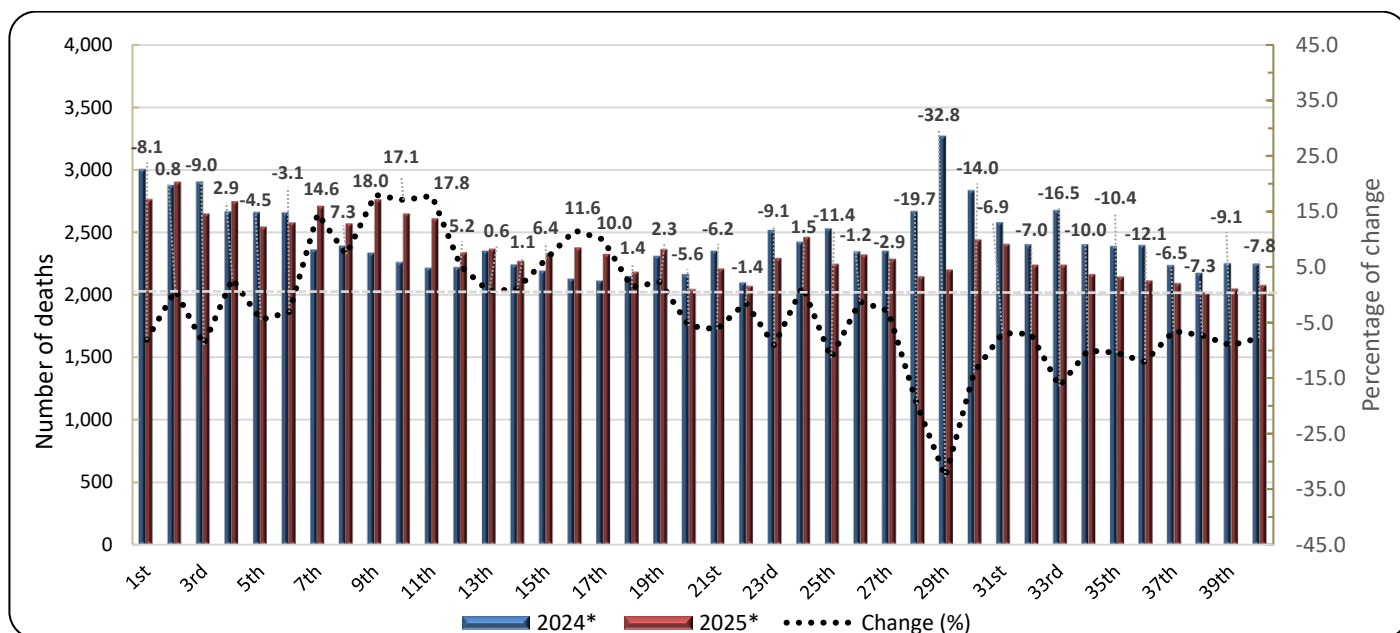
## DATA ON WEEKLY DEATHS: Period 1<sup>st</sup> to 40<sup>th</sup> week, 2025

The Hellenic Statistical Authority (ELSTAT) announces the provisional statistical data depicting the weekly evolution of death counts for the period from the first (1<sup>st</sup>) to the fortieth (40<sup>th</sup>) week of 2025 (30/12/2024 – 05/10/2025), according to the international standard of dates ISO8601. Data refer to the deaths that occurred in the Greek territory during that period due to various causes including deaths attributed to Covid-19.

The data included in this publication are compiled within the framework of the Vital Statistics Survey, are drawn from civil registry acts as submitted by Municipal Authorities and refer to vital events declared and registered until the date of data transmission. Overdue registrations of deaths are integrated at a later stage on the date of occurrence.

According to these data, **the number of deaths in Greece during the first forty (40) weeks of 2025 (30/12/2024 – 05/10/2025) amounted to 94,091** (47,554 men and 46,537 women), **whereas during the corresponding period of 2024 (01/01/2024 – 06/10/2024) had amounted to 97,263** (48,875 men and 48,388 women) recording a decrease of 3,172 deaths (-3.3%). A decrease of 7,140 deaths (-7.1%) is recorded compared to the average of the first forty (40) weeks cumulative deaths for the six-year period 2019 – 2024 (101,231 deaths). The corresponding annual rates of change for the period 2019 - 2024 amount to -1.5% in 2024 compared to 2023 (98,768), -9.9% in 2023 compared to 2022 (109,595), 1.9% in 2022 compared to 2021 (107,511), 10.4% in 2021 compared to 2020 (97,365) and 0.5% in 2020 compared to 2019 (96,883) (Tables 1, 2, 3 and 4).

Graph 1. Weekly evolution of deaths for the weeks 1<sup>st</sup> – 40<sup>th</sup>, 2024 and 2025



\*Provisional data

### Information on methodological issues:

Population, Employment and Cost of Living Statistics Division

Population and Migration Statistics Section

Thymoglou Georgia, tel: +30 213 135 2175, e-mail: [g.thymoglou@statistics.gr](mailto:g.thymoglou@statistics.gr)

Christou Christos, tel: +30 213 135 2884, e-mail: [c.christou@statistics.gr](mailto:c.christou@statistics.gr)

Paschalidou Eleftheria, tel: +30 213 135 2873, e-mail: [e.paschalidou@statistics.gr](mailto:e.paschalidou@statistics.gr)

### Information on data provision:

tel: +30 213 135 2022, 2308, 2310

e-mail: [data.dissem@statistics.gr](mailto:data.dissem@statistics.gr)

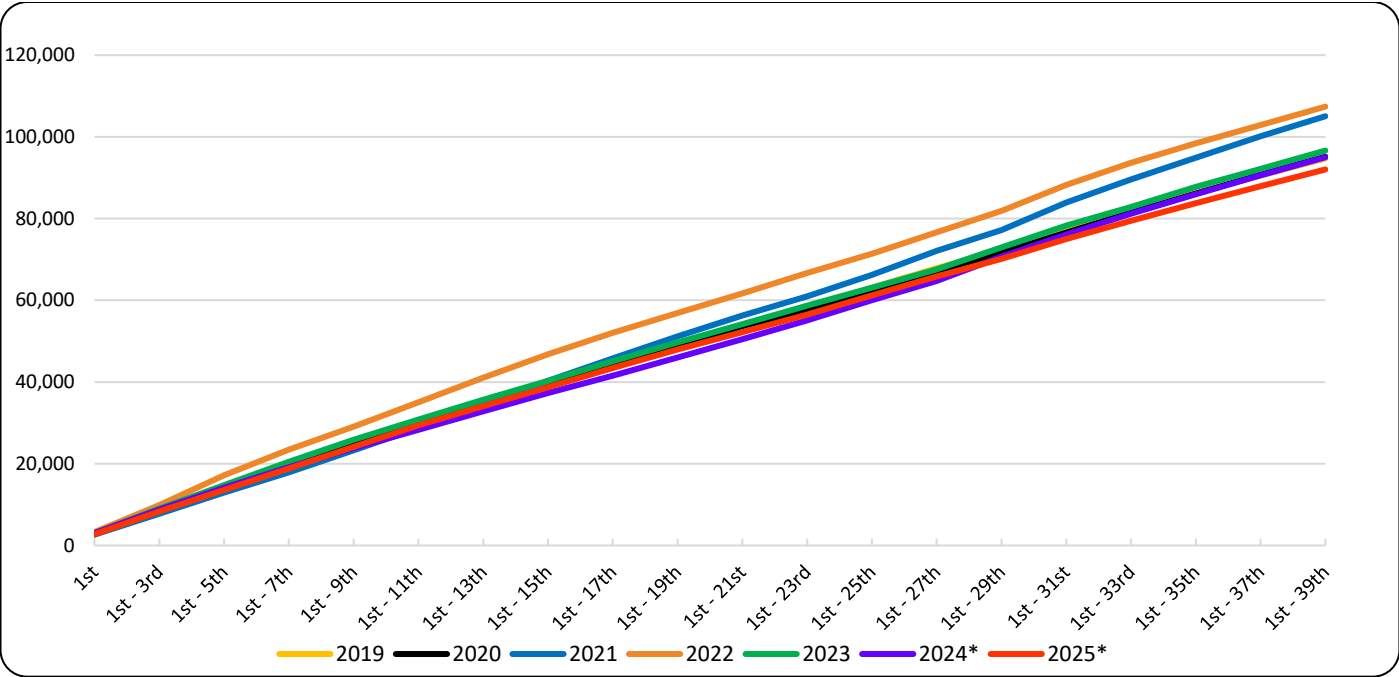
**Table 1. Weekly evolution of deaths, 2024 and 2025**

<b>Week</b>	<b>2024*</b>	<b>2025*</b>	<b>Change (%)</b>
1 <sup>st</sup>	3,003	2,759	-8.1
2 <sup>nd</sup>	2,875	2,898	0.8
3 <sup>rd</sup>	2,903	2,643	-9.0
4 <sup>th</sup>	2,664	2,741	2.9
5 <sup>th</sup>	2,658	2,538	-4.5
6 <sup>th</sup>	2,656	2,573	-3.1
7 <sup>th</sup>	2,360	2,705	14.6
8 <sup>th</sup>	2,390	2,564	7.3
9 <sup>th</sup>	2,334	2,755	18.0
10 <sup>th</sup>	2,258	2,644	17.1
11 <sup>th</sup>	2,212	2,605	17.8
12 <sup>th</sup>	2,218	2,334	5.2
13 <sup>th</sup>	2,348	2,362	0.6
14 <sup>th</sup>	2,238	2,263	1.1
15 <sup>th</sup>	2,189	2,329	6.4
16 <sup>th</sup>	2,127	2,373	11.6
17 <sup>th</sup>	2,110	2,320	10.0
18 <sup>th</sup>	2,147	2,177	1.4
19 <sup>th</sup>	2,307	2,360	2.3
20 <sup>th</sup>	2,162	2,040	-5.6
21 <sup>st</sup>	2,348	2,203	-6.2
22 <sup>nd</sup>	2,095	2,065	-1.4
23 <sup>rd</sup>	2,516	2,287	-9.1
24 <sup>th</sup>	2,421	2,457	1.5
25 <sup>th</sup>	2,529	2,240	-11.4
26 <sup>th</sup>	2,344	2,316	-1.2
27 <sup>th</sup>	2,348	2,281	-2.9
28 <sup>th</sup>	2,666	2,141	-19.7
29 <sup>th</sup>	3,268	2,195	-32.8
30 <sup>th</sup>	2,834	2,436	-14.0
31 <sup>st</sup>	2,578	2,399	-6.9
32 <sup>nd</sup>	2,400	2,233	-7.0
33 <sup>rd</sup>	2,675	2,233	-16.5
34 <sup>th</sup>	2,399	2,160	-10.0
35 <sup>th</sup>	2,386	2,139	-10.4
36 <sup>th</sup>	2,396	2,107	-12.1
37 <sup>th</sup>	2,233	2,087	-6.5
38 <sup>th</sup>	2,171	2,012	-7.3
39 <sup>th</sup>	2,250	2,045	-9.1
40 <sup>th</sup>	2,247	2,072	-7.8
<b>Total</b>	<b>97,263</b>	<b>94,091</b>	<b>-3.3</b>

\*Provisional data

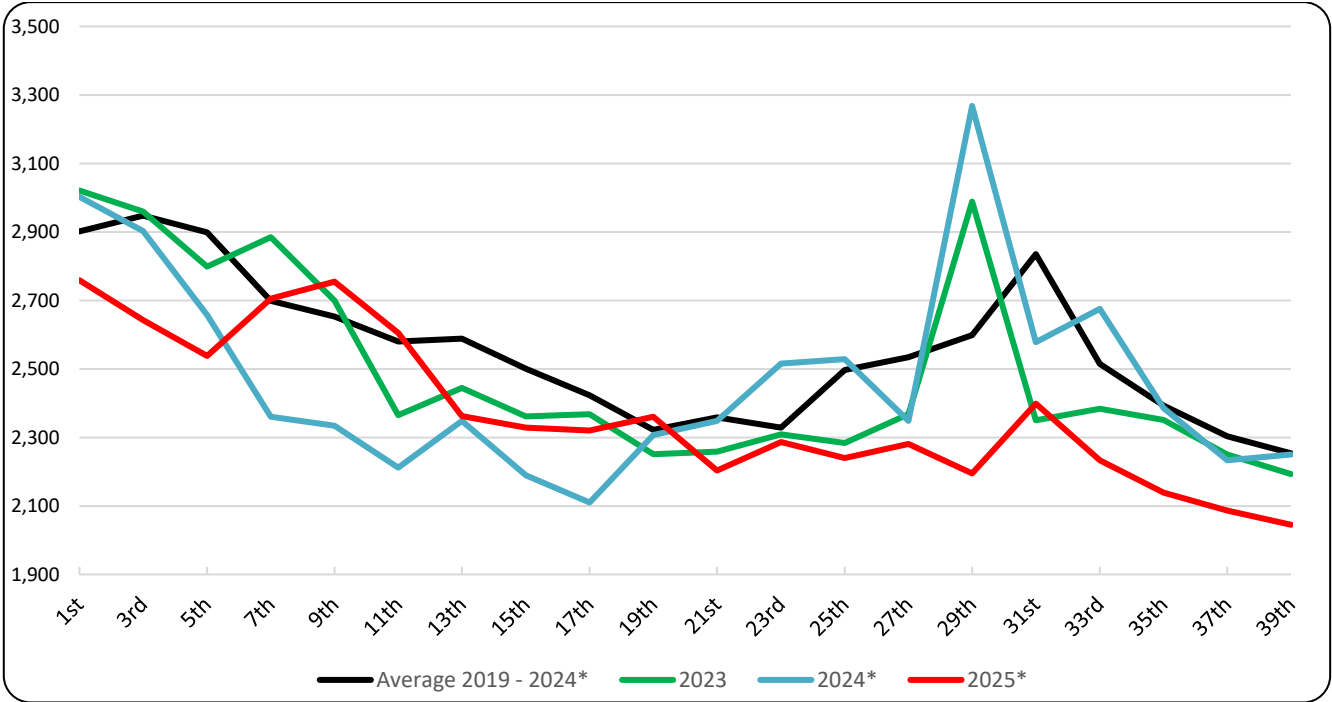
According to the above data, for the first forty (40) weeks of 2025 compared to the corresponding period of 2024, the most notable increases are observed for the 9<sup>th</sup> (24/02/2025 - 02/03/2025), the 11<sup>th</sup> (10/03/2025 - 16/03/2025) and the 10<sup>th</sup> week (03/03/2025 - 09/03/2025) by 18.0%, 17.8% and 17.1% respectively, whereas the most notable decreases are observed for the 29<sup>th</sup> (14/07/2025 - 20/07/2025), the 28<sup>th</sup> (07/07/2025 - 13/07/2025) and the 33<sup>rd</sup> week (11/08/2025 - 17/08/2025) by 32.8%, 19.7% and 16.5% respectively. It should be noted that data are updated after integration of more recent data or upon revision of already transmitted data by the Registry Offices. As a result, data may differ from those already announced in previous publications.

**Graph 2. Deaths for the weeks 1<sup>st</sup> – 40<sup>th</sup>, 2019 - 2025 (cumulative)**



\*Provisional data

**Graph 3. Deaths by week for the weeks 1<sup>st</sup> – 40<sup>th</sup>, 2023, 2024, 2025 and Average for the period 2019 – 2024**



\*Provisional data

**Table 2. Deaths for the weeks 1<sup>st</sup> – 40<sup>th</sup>, 2019 - 2025 (cumulative)**

<b>Week</b>	<b>2019</b>	<b>2020</b>	<b>2021</b>	<b>2022</b>	<b>2023</b>	<b>2024*</b>	<b>2025*</b>	<b>Average 2019 - 2024*</b>
1 <sup>st</sup>	2,706	2,751	2,650	3,276	3,021	3,003	2,759	2,901
1 <sup>st</sup> - 2 <sup>nd</sup>	5,811	5,674	5,147	6,654	6,107	5,878	5,657	5,879
1 <sup>st</sup> - 3 <sup>rd</sup>	8,850	8,537	7,798	9,924	9,067	8,781	8,300	8,826
1 <sup>st</sup> - 4 <sup>th</sup>	11,710	11,311	10,423	13,603	11,914	11,445	11,041	11,734
1 <sup>st</sup> - 5 <sup>th</sup>	14,603	14,301	12,916	17,164	14,713	14,103	13,579	14,633
1 <sup>st</sup> - 6 <sup>th</sup>	17,375	17,151	15,379	20,406	17,573	16,759	16,152	17,441
1 <sup>st</sup> - 7 <sup>th</sup>	19,938	19,933	17,914	23,475	20,458	19,119	18,857	20,140
1 <sup>st</sup> - 8 <sup>th</sup>	22,598	22,402	20,582	26,272	23,203	21,509	21,421	22,761
1 <sup>st</sup> - 9 <sup>th</sup>	25,367	24,947	23,306	29,119	25,903	23,843	24,176	25,414
1 <sup>st</sup> - 10 <sup>th</sup>	27,886	27,592	25,963	31,967	28,428	26,101	26,820	27,990
1 <sup>st</sup> - 11 <sup>th</sup>	30,356	30,186	28,751	35,016	30,793	28,313	29,425	30,569
1 <sup>st</sup> - 12 <sup>th</sup>	32,747	32,734	31,510	38,058	33,222	30,531	31,759	33,134
1 <sup>st</sup> - 13 <sup>th</sup>	35,079	35,173	34,440	41,096	35,667	32,879	34,121	35,722
1 <sup>st</sup> - 14 <sup>th</sup>	37,492	37,627	37,338	43,968	37,945	35,117	36,384	38,248
1 <sup>st</sup> - 15 <sup>th</sup>	39,804	39,989	40,309	46,775	40,306	37,306	38,713	40,748
1 <sup>st</sup> - 16 <sup>th</sup>	42,024	42,257	42,972	49,401	42,674	39,433	41,086	43,127
1 <sup>st</sup> - 17 <sup>th</sup>	44,427	44,460	45,777	52,048	45,042	41,543	43,406	45,550
1 <sup>st</sup> - 18 <sup>th</sup>	46,787	46,767	48,714	54,388	47,415	43,690	45,583	47,960
1 <sup>st</sup> - 19 <sup>th</sup>	49,110	48,895	51,153	56,874	49,666	45,997	47,943	50,283
1 <sup>st</sup> - 20 <sup>th</sup>	51,378	51,369	53,654	59,273	51,898	48,159	49,983	52,622
1 <sup>st</sup> - 21 <sup>st</sup>	53,588	53,698	56,238	61,696	54,157	50,507	52,186	54,981
1 <sup>st</sup> - 22 <sup>nd</sup>	55,869	55,659	58,556	64,293	56,366	52,602	54,251	57,224
1 <sup>st</sup> - 23 <sup>rd</sup>	58,154	57,760	60,949	66,662	58,675	55,118	56,538	59,553
1 <sup>st</sup> - 24 <sup>th</sup>	60,700	59,971	63,263	68,938	60,769	57,539	58,995	61,863
1 <sup>st</sup> - 25 <sup>th</sup>	63,076	62,325	66,223	71,415	63,053	60,068	61,235	64,360
1 <sup>st</sup> - 26 <sup>th</sup>	65,495	64,506	69,377	73,941	65,207	62,412	63,551	66,823
1 <sup>st</sup> - 27 <sup>th</sup>	67,872	67,177	72,080	76,681	67,575	64,760	65,832	69,358
1 <sup>st</sup> - 28 <sup>th</sup>	70,130	69,481	74,782	79,261	69,999	67,426	67,973	71,847
1 <sup>st</sup> - 29 <sup>th</sup>	72,227	71,618	77,233	81,913	72,988	70,694	70,168	74,446
1 <sup>st</sup> - 30 <sup>th</sup>	74,564	73,853	80,060	85,137	75,947	73,528	72,604	77,182
1 <sup>st</sup> - 31 <sup>st</sup>	76,950	76,567	83,955	88,226	78,297	76,106	75,003	80,017
1 <sup>st</sup> - 32 <sup>nd</sup>	79,341	79,095	86,909	90,992	80,423	78,506	77,236	82,544
1 <sup>st</sup> - 33 <sup>rd</sup>	81,702	81,462	89,582	93,619	82,807	81,181	79,469	85,059
1 <sup>st</sup> - 34 <sup>th</sup>	83,966	83,823	92,363	96,002	85,426	83,580	81,629	87,527
1 <sup>st</sup> - 35 <sup>th</sup>	86,322	86,121	94,930	98,401	87,777	85,966	83,768	89,920
1 <sup>st</sup> - 36 <sup>th</sup>	88,444	88,436	97,452	100,649	89,938	88,362	85,875	92,214
1 <sup>st</sup> - 37 <sup>th</sup>	90,528	90,710	100,173	102,910	92,188	90,595	87,962	94,517
1 <sup>st</sup> - 38 <sup>th</sup>	92,638	92,986	102,613	105,008	94,459	92,766	89,974	96,745
1 <sup>st</sup> - 39 <sup>th</sup>	94,725	95,142	105,055	107,402	96,652	95,016	92,019	98,999
1 <sup>st</sup> - 40 <sup>th</sup>	96,883	97,365	107,511	109,595	98,768	97,263	94,091	101,231
<b>Change (%)</b>		<b>0.5</b>	<b>10.4</b>	<b>1.9</b>	<b>-9.9</b>	<b>-1.5</b>	<b>-3.3</b>	

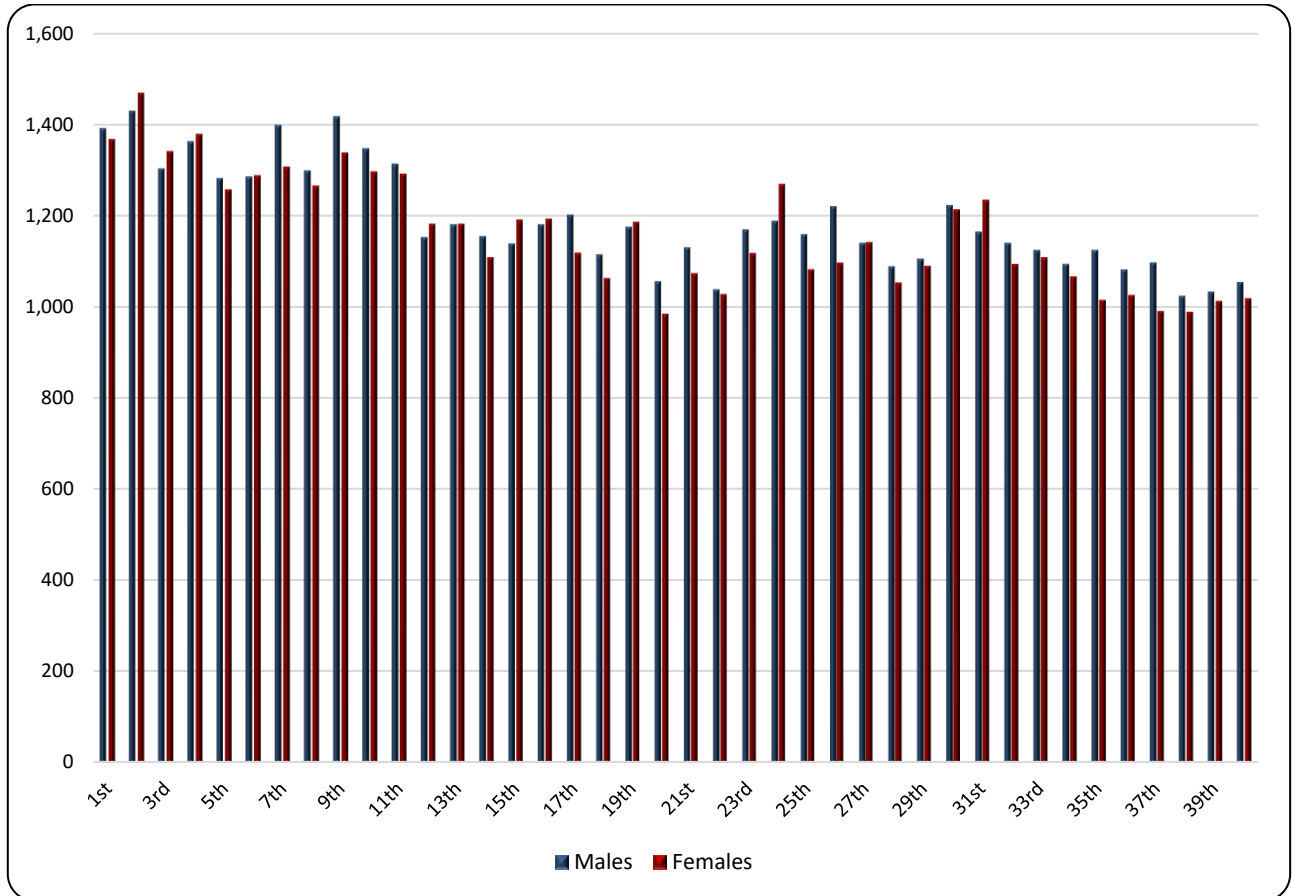
\*Provisional data

**Table 3. Weekly evolution of deaths by sex, for the weeks 1<sup>st</sup> – 40<sup>th</sup>, 2025\***

<b>Week</b>	<b>Total</b>	<b>Males</b>	<b>Females</b>
1 <sup>st</sup>	2,759	1,391	1,368
2 <sup>nd</sup>	2,898	1,429	1,469
3 <sup>rd</sup>	2,643	1,302	1,341
4 <sup>th</sup>	2,741	1,362	1,379
5 <sup>th</sup>	2,538	1,281	1,257
6 <sup>th</sup>	2,573	1,285	1,288
7 <sup>th</sup>	2,705	1,398	1,307
8 <sup>th</sup>	2,564	1,298	1,266
9 <sup>th</sup>	2,755	1,417	1,338
10 <sup>th</sup>	2,644	1,347	1,297
11 <sup>th</sup>	2,605	1,313	1,292
12 <sup>th</sup>	2,334	1,152	1,182
13 <sup>th</sup>	2,362	1,180	1,182
14 <sup>th</sup>	2,263	1,154	1,109
15 <sup>th</sup>	2,329	1,138	1,191
16 <sup>th</sup>	2,373	1,180	1,193
17 <sup>th</sup>	2,320	1,201	1,119
18 <sup>th</sup>	2,177	1,114	1,063
19 <sup>th</sup>	2,360	1,174	1,186
20 <sup>th</sup>	2,040	1,055	985
21 <sup>st</sup>	2,203	1,129	1,074
22 <sup>nd</sup>	2,065	1,037	1,028
23 <sup>rd</sup>	2,287	1,169	1,118
24 <sup>th</sup>	2,457	1,188	1,269
25 <sup>th</sup>	2,240	1,158	1,082
26 <sup>th</sup>	2,316	1,219	1,097
27 <sup>th</sup>	2,281	1,139	1,142
28 <sup>th</sup>	2,141	1,088	1,053
29 <sup>th</sup>	2,195	1,105	1,090
30 <sup>th</sup>	2,436	1,222	1,214
31 <sup>st</sup>	2,399	1,164	1,235
32 <sup>nd</sup>	2,233	1,139	1,094
33 <sup>rd</sup>	2,233	1,124	1,109
34 <sup>th</sup>	2,160	1,093	1,067
35 <sup>th</sup>	2,139	1,124	1,015
36 <sup>th</sup>	2,107	1,081	1,026
37 <sup>th</sup>	2,087	1,096	991
38 <sup>th</sup>	2,012	1,023	989
39 <sup>th</sup>	2,045	1,032	1,013
40 <sup>th</sup>	2,072	1,053	1,019
<b>Total</b>	<b>94,091</b>	<b>47,554</b>	<b>46,537</b>

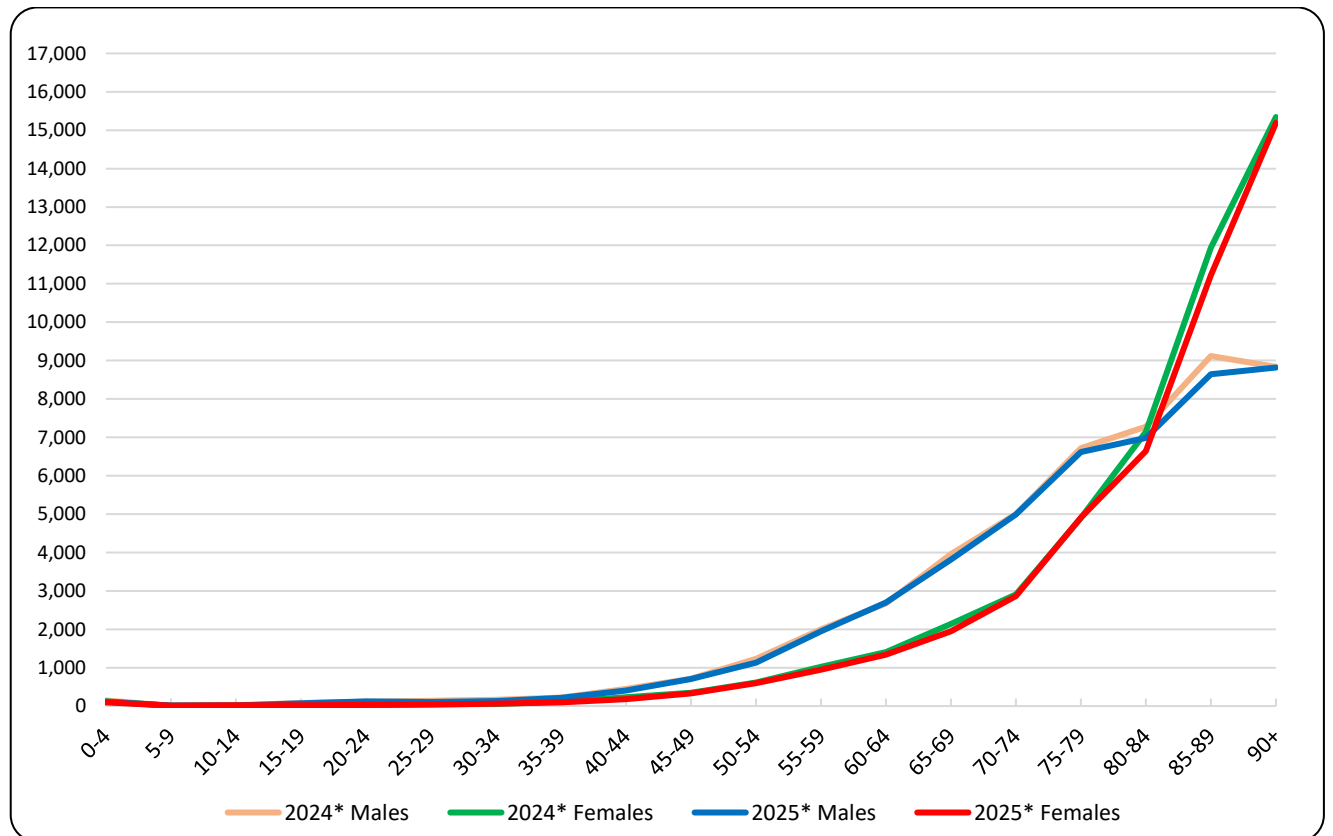
\*Provisional data

**Graph 4. Weekly evolution of deaths by sex, for the weeks 1<sup>st</sup> – 40<sup>th</sup>, 2025\***



\*Provisional data

**Graph 5. Deaths by age group and sex, 1<sup>st</sup> – 40<sup>th</sup> week, 2024 and 2025**



\*Provisional data

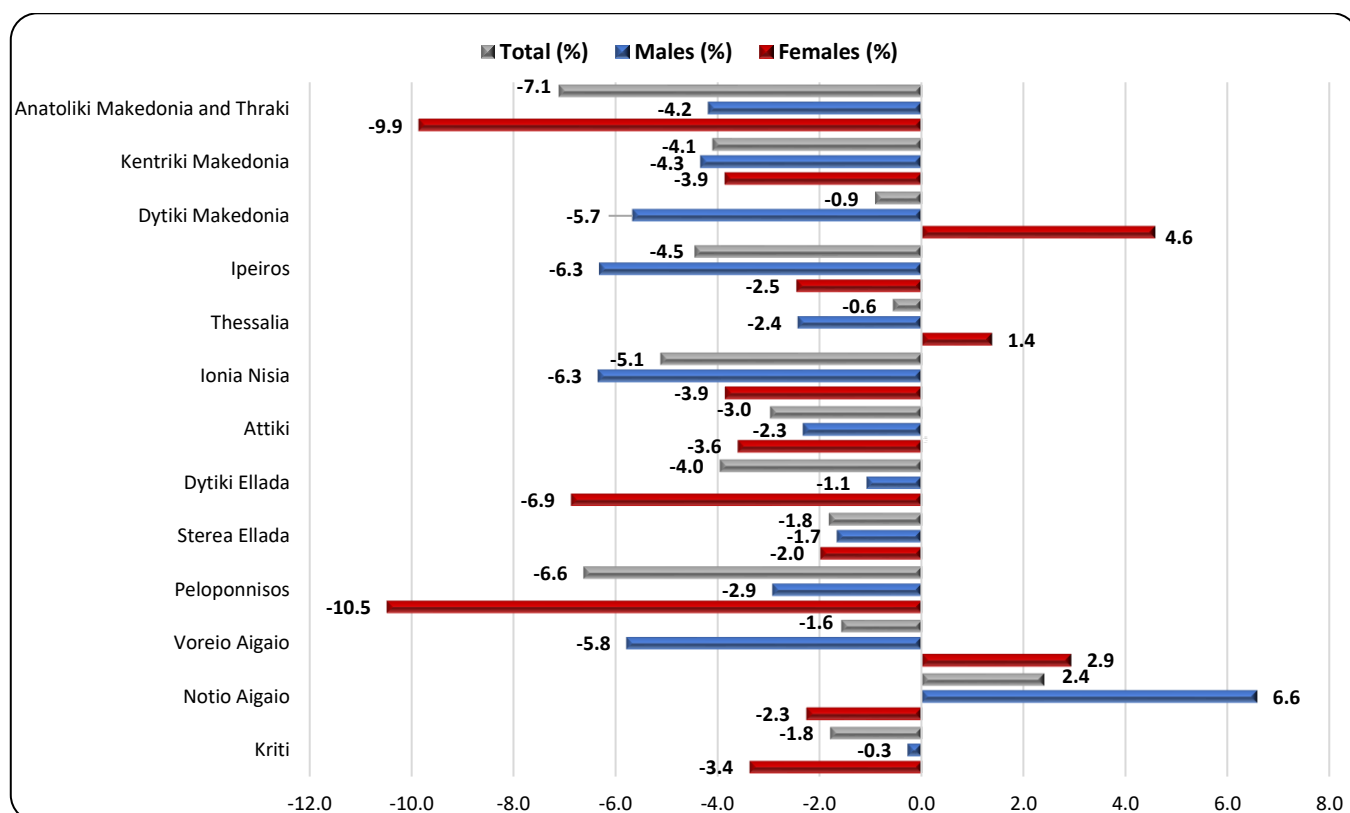
**Table 4. Deaths by age group and sex, weeks 1<sup>st</sup> – 40<sup>th</sup>, 2024 and 2025**

Age Group	2024*			2025*		
	Total	Males	Females	Total	Males	Females
0 - 4	266	148	118	210	113	97
5 - 9	17	8	9	27	16	11
10 - 14	34	19	15	34	15	19
15 - 19	103	81	22	93	72	21
20 - 24	139	115	24	148	119	29
25 - 29	182	139	43	145	109	36
30 - 34	222	167	55	190	130	60
35 - 39	338	223	115	311	212	99
40 - 44	676	445	231	590	409	181
45 - 49	1,060	713	347	1,031	702	329
50 - 54	1,850	1,235	615	1,722	1,129	593
55 - 59	3,016	1,997	1,019	2,894	1,946	948
60 - 64	4,085	2,675	1,410	4,032	2,696	1,336
65 - 69	6,095	3,955	2,140	5,761	3,816	1,945
70 - 74	7,908	5,002	2,906	7,859	4,995	2,864
75 - 79	11,618	6,720	4,898	11,525	6,616	4,909
80 - 84	14,414	7,274	7,140	13,630	6,986	6,644
85 - 89	21,053	9,118	11,935	19,866	8,645	11,221
90+	24,179	8,836	15,343	24,010	8,818	15,192
Unknown	8	5	3	13	10	3
<b>Total</b>	<b>97,263</b>	<b>48,875</b>	<b>48,388</b>	<b>94,091</b>	<b>47,554</b>	<b>46,537</b>

\*Provisional data

As regards the breakdown of the total number of deaths by age group of the deceased for the first forty (40) weeks of 2025, compared to the corresponding period of the year 2024, an increase of deaths is observed in two (2) age groups and a decrease in sixteen (16) age groups, while there was no change in the age group of 10 to 14. The increases, in absolute figures, are observed for the age groups of 5 to 9 (10 deaths) and 20 to 24 (9 deaths) compared to the corresponding period of 2024, whereas the most notable decreases are observed for the age groups of 85 to 89 (1,187 deaths), 80 to 84 (784 deaths) and 65 to 69 (334 deaths) (Table 4).

**Graph 6. Annual change of deaths 2025\*/2024\* (%) by sex and Region of usual residence, weeks 1<sup>st</sup> – 40<sup>th</sup>**



\*Provisional data

**Table 5. Annual change of deaths 2025/2024 (%) by sex and Region of usual residence, weeks 1<sup>st</sup> – 40<sup>th</sup>**

Region	2024*			2025*			Change (%)		
	Total	Males	Females	Total	Males	Females	Total	Males	Females
Anatoliki Makedonia and Thraki	6,005	2,913	3,092	5,578	2,791	2,787	-7.1	-4.2	-9.9
Kentriki Makedonia	16,742	8,389	8,353	16,055	8,025	8,030	-4.1	-4.3	-3.9
Dytiki Makedonia	2,499	1,341	1,158	2,476	1,265	1,211	-0.9	-5.7	4.6
Ipeiros	3,189	1,645	1,544	3,047	1,541	1,506	-4.5	-6.3	-2.5
Thessalia	6,834	3,498	3,336	6,795	3,413	3,382	-0.6	-2.4	1.4
Ionia Nisia	2,050	1,040	1,010	1,945	974	971	-5.1	-6.3	-3.9
Attiki	33,432	16,558	16,874	32,438	16,173	16,265	-3.0	-2.3	-3.6
Dytiki Ellada	6,088	3,062	3,026	5,847	3,029	2,818	-4.0	-1.1	-6.9
Stereia Ellada	5,270	2,652	2,618	5,174	2,608	2,566	-1.8	-1.7	-2.0
Peloponnisos	5,825	2,973	2,852	5,439	2,886	2,553	-6.6	-2.9	-10.5
Voreio Aigaio	1,838	951	887	1,809	896	913	-1.6	-5.8	2.9
Notio Aigaio	2,424	1,277	1,147	2,482	1,361	1,121	2.4	6.6	-2.3
Kriti	5,053	2,566	2,487	4,962	2,559	2,403	-1.8	-0.3	-3.4
Unknown	14	10	4	44	33	11	214.3	230.0	175.0
<b>Total</b>	<b>97,263</b>	<b>48,875</b>	<b>48,388</b>	<b>94,091</b>	<b>47,554</b>	<b>46,537</b>	<b>-3.3</b>	<b>-2.7</b>	<b>-3.8</b>
Abroad	850	571	279	855	554	301	0.6	-3.0	7.9

\* Provisional data

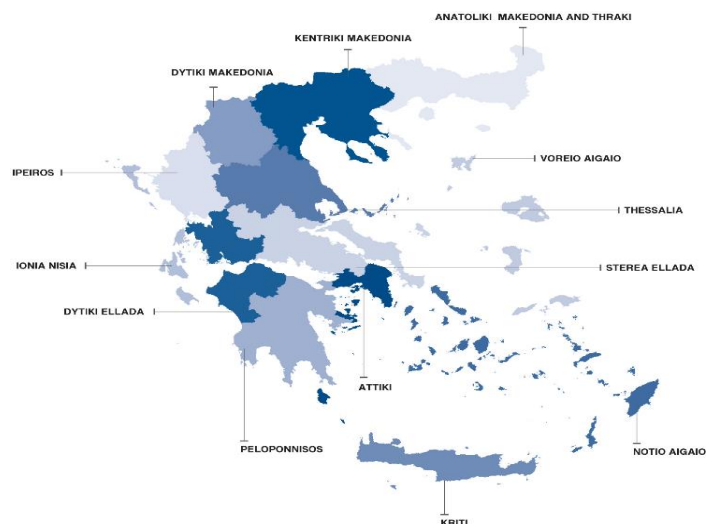
As regards the breakdown of the total number of deaths by Region of usual residence of the deceased for the first forty (40) weeks of 2025 compared to the corresponding period of the year 2024, an increase of deaths is observed in the Region of Notio Aigaio by 58 deaths. The most notable decreases, in absolute values, are observed in the Regions of Attiki, Kentriki Makedonia and Anatoliki Makedonia and Thraki by 994, 687 and 427 deaths respectively (Graph 6, Table 5).



## **EXPLANATORY NOTES**

<b>Vital Statistics-Data on weekly deaths</b>	For the Vital Statistics Survey, data are drawn from civil registry acts edited by the Municipal Authorities. Data presented in this publication refer to the weekly evolution of death counts according to the international standard of weeks ISO8601. This is a data processing for the purpose of depicting, even using provisional data, the evolution of deaths in the Country and timely recording of mortality levels in relation to basic demographic variables.
<b>Reference periods</b>	2024: 01/01/2024 - 06/10/2024 2025: 30/12/2024 - 05/10/2025
<b>Legal Framework</b>	Law 344/76 concerning the “Registration of vital events” which lays down the obligations of the Civil Register Offices to collect and then transmit the data, as well as by Law 3832/2010 on the “Greek Statistical System”, both as amended.
<b>Coverage</b>	The Vital Statistics Survey is an exhaustive survey and covers all deaths of usual resident population that occur in the Greek territory.
<b>Definitions</b>	All deaths of usual residents taking place in the Greek territory are recorded, regardless of the cause of death. Deaths of usual resident population of other countries are also recorded but not counted. The deaths of migrant-refugees in the Greek territory during their attempt to approach European countries are not included. Causes of death are defined according to the International Statistical Classification of Diseases and Related Health Problems (ICD-10) and basic categories are Diseases of the Circulatory System, Diseases of the Respiratory System, Neoplasms, Infectious and Parasitic Diseases, Violent deaths and other causes, Covid-19 included.
<b>Methodology</b>	Data on deaths and Vital Statistics undergo the necessary quality checks, are processed, and presented in the form of tables.
<b>Geographical classification</b>	Geographical classification is based on the Nomenclature of Territorial Units for Statistics (NUTS). Data are disseminated at Country and Region (NUTS2) level.

**Map of the Regions (NUTS2) of Greece**



**International Standard of Dates** According to the international standard of dates ISO8601, the forty (40) weeks of 2024 and 2025 are defined as follows:

WEEK	2024	2025
1 <sup>st</sup>	01/01/2024 - 07/01/2024	30/12/2024 - 05/01/2025
2 <sup>nd</sup>	08/01/2024 - 14/01/2024	06/01/2025 - 12/01/2025
3 <sup>rd</sup>	15/01/2024 - 21/01/2024	13/01/2025 - 19/01/2025
4 <sup>th</sup>	22/01/2024 - 28/01/2024	20/01/2025 - 26/01/2025
5 <sup>th</sup>	29/01/2024 - 04/02/2024	27/01/2025 - 02/02/2025
6 <sup>th</sup>	05/02/2024 - 11/02/2024	03/02/2025 - 09/02/2025
7 <sup>th</sup>	12/02/2024 - 18/02/2024	10/02/2025 - 16/02/2025
8 <sup>th</sup>	19/02/2024 - 25/02/2024	17/02/2025 - 23/02/2025
9 <sup>th</sup>	26/02/2024 - 03/03/2024	24/02/2025 - 02/03/2025
10 <sup>th</sup>	04/03/2024 - 10/03/2024	03/03/2025 - 09/03/2025
11 <sup>th</sup>	11/03/2024 - 17/03/2024	10/03/2025 - 16/03/2025
12 <sup>th</sup>	18/03/2024 - 24/03/2024	17/03/2025 - 23/03/2025
13 <sup>th</sup>	25/03/2024 - 31/03/2024	24/03/2025 - 30/03/2025
14 <sup>th</sup>	01/04/2024 - 07/04/2024	31/03/2025 - 06/04/2025
15 <sup>th</sup>	08/04/2024 - 14/04/2024	07/04/2025 - 13/04/2025
16 <sup>th</sup>	15/04/2024 - 21/04/2024	14/04/2025 - 20/04/2025
17 <sup>th</sup>	22/04/2024 - 28/04/2024	21/04/2025 - 27/04/2025
18 <sup>th</sup>	29/04/2024 - 05/05/2024	28/04/2025 - 04/05/2025
19 <sup>th</sup>	06/05/2024 - 12/05/2024	05/05/2025 - 11/05/2025
20 <sup>th</sup>	13/05/2024 - 19/05/2024	12/05/2025 - 18/05/2025
21 <sup>st</sup>	20/05/2024 - 26/05/2024	19/05/2025 - 25/05/2025
22 <sup>nd</sup>	27/05/2024 - 02/06/2024	26/05/2025 - 01/06/2025
23 <sup>rd</sup>	03/06/2024 - 09/06/2024	02/06/2025 - 08/06/2025
24 <sup>th</sup>	10/06/2024 - 16/06/2024	09/06/2025 - 15/06/2025
25 <sup>th</sup>	17/06/2024 - 23/06/2024	16/06/2025 - 22/06/2025
26 <sup>th</sup>	24/06/2024 - 30/06/2024	23/06/2025 - 29/06/2025
27 <sup>th</sup>	01/07/2024 - 07/07/2024	30/06/2025 - 06/07/2025
28 <sup>th</sup>	08/07/2024 - 14/07/2024	07/07/2025 - 13/07/2025
29 <sup>th</sup>	15/07/2024 - 21/07/2024	14/07/2025 - 20/07/2025
30 <sup>th</sup>	22/07/2024 - 28/07/2024	21/07/2025 - 27/07/2025
31 <sup>st</sup>	29/07/2024 - 04/08/2024	28/07/2025 - 03/08/2025
32 <sup>nd</sup>	05/08/2024 - 11/08/2024	04/08/2025 - 10/08/2025
33 <sup>rd</sup>	12/08/2024 - 18/08/2024	11/08/2025 - 17/08/2025
34 <sup>th</sup>	19/08/2024 - 25/08/2024	18/08/2025 - 24/08/2025
35 <sup>th</sup>	26/08/2024 - 01/09/2024	25/08/2025 - 31/08/2025
36 <sup>th</sup>	02/09/2024 - 08/09/2024	01/09/2025 - 07/09/2025
37 <sup>th</sup>	09/09/2024 - 15/09/2024	08/09/2025 - 14/09/2025
38 <sup>th</sup>	16/09/2024 - 22/09/2024	15/09/2025 - 21/09/2025
39 <sup>th</sup>	23/09/2024 - 29/09/2024	22/09/2025 - 28/09/2025
40 <sup>th</sup>	30/09/2024 - 06/10/2024	29/09/2025 - 05/10/2025

**References** More information on deaths and Vital Statistics is available on the website of ELSTAT: <https://www.statistics.gr/en/statistics/pop> following the link: Statistics, Population and Social Conditions, Demography.