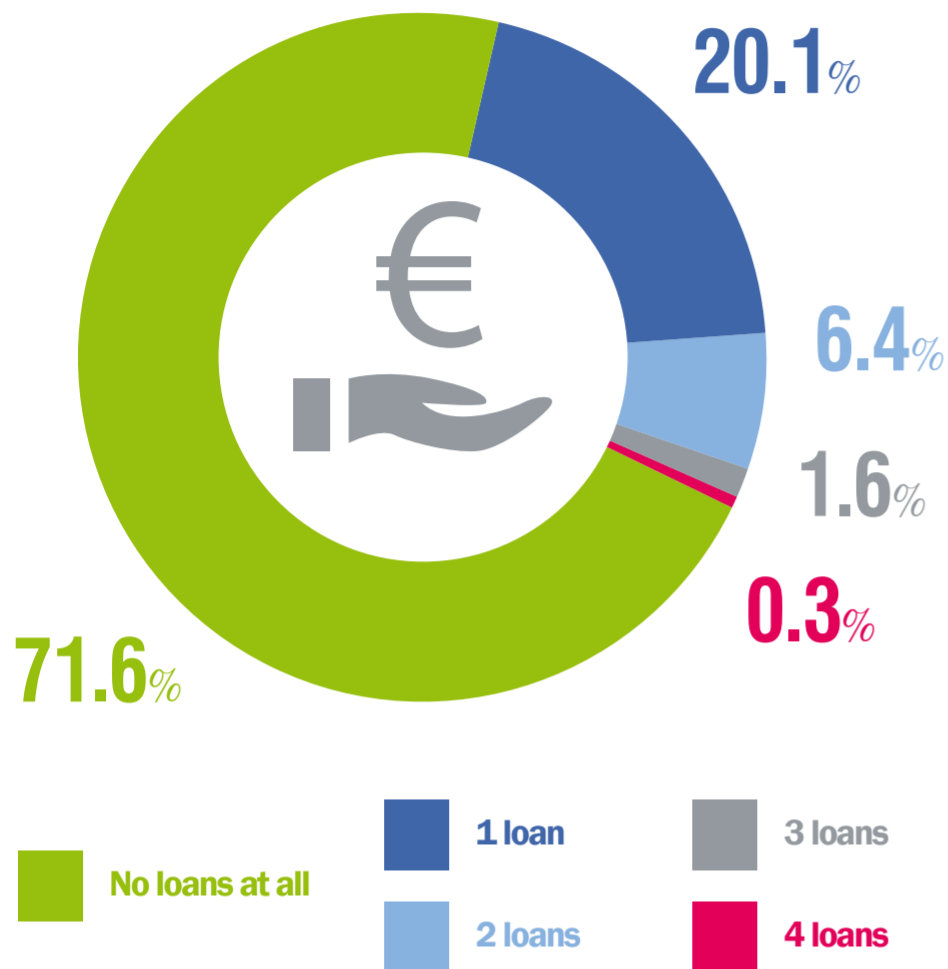
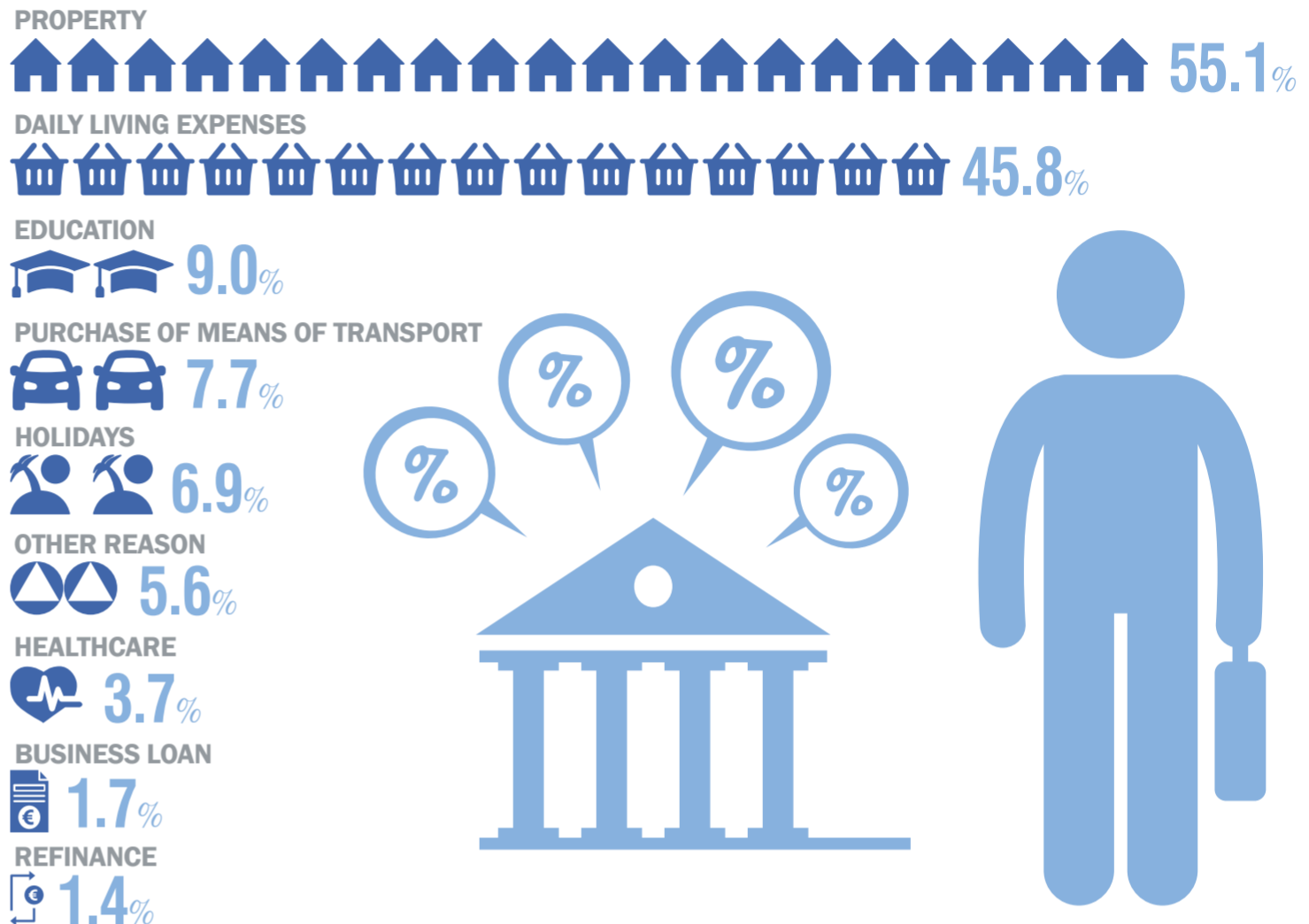


# OVER-INDEBTEDNESS, CONSUMPTION AND WEALTH OF THE HOUSEHOLDS, 2020

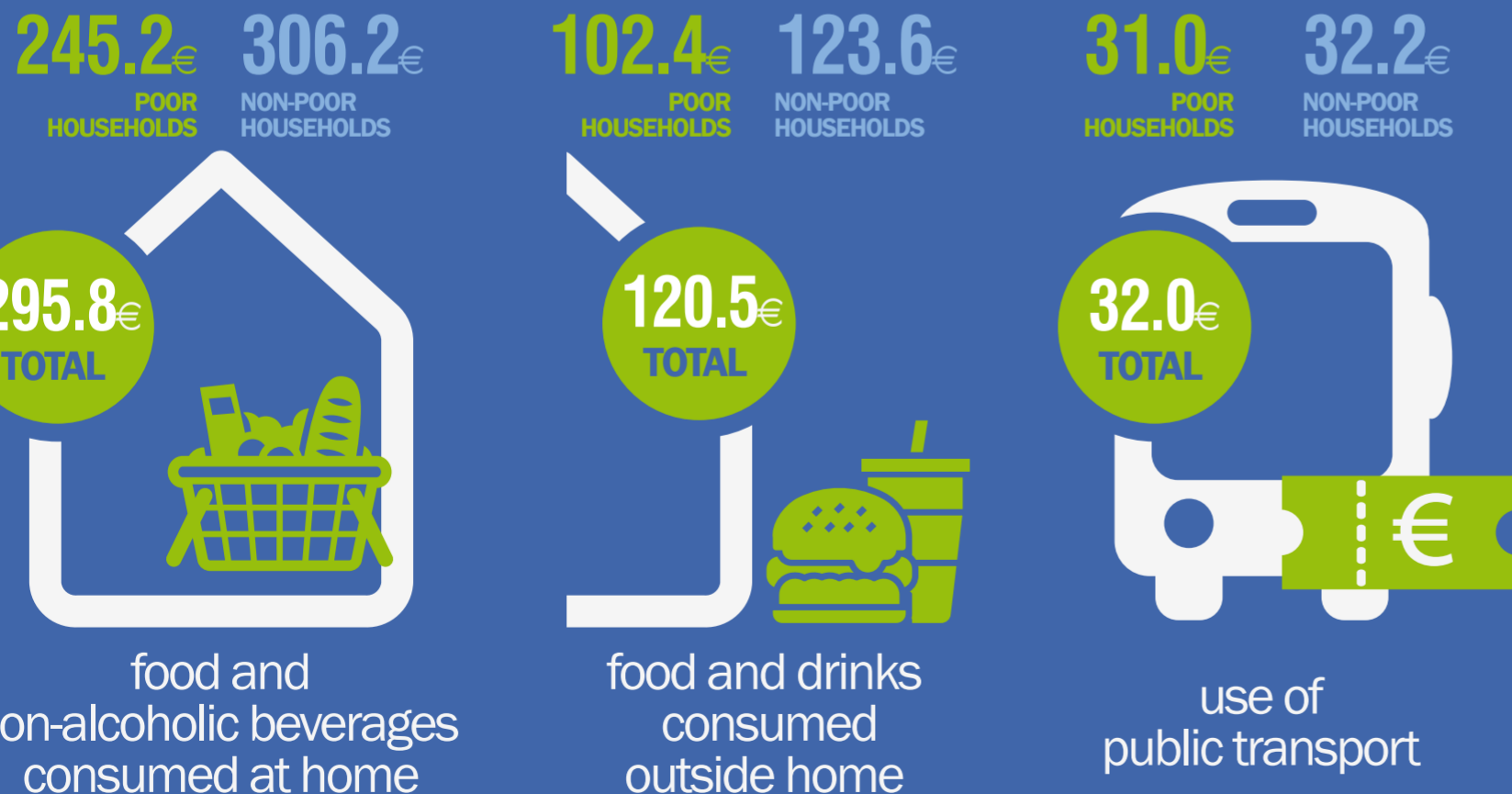
## HOUSEHOLDS LOANS (excluding main residence)



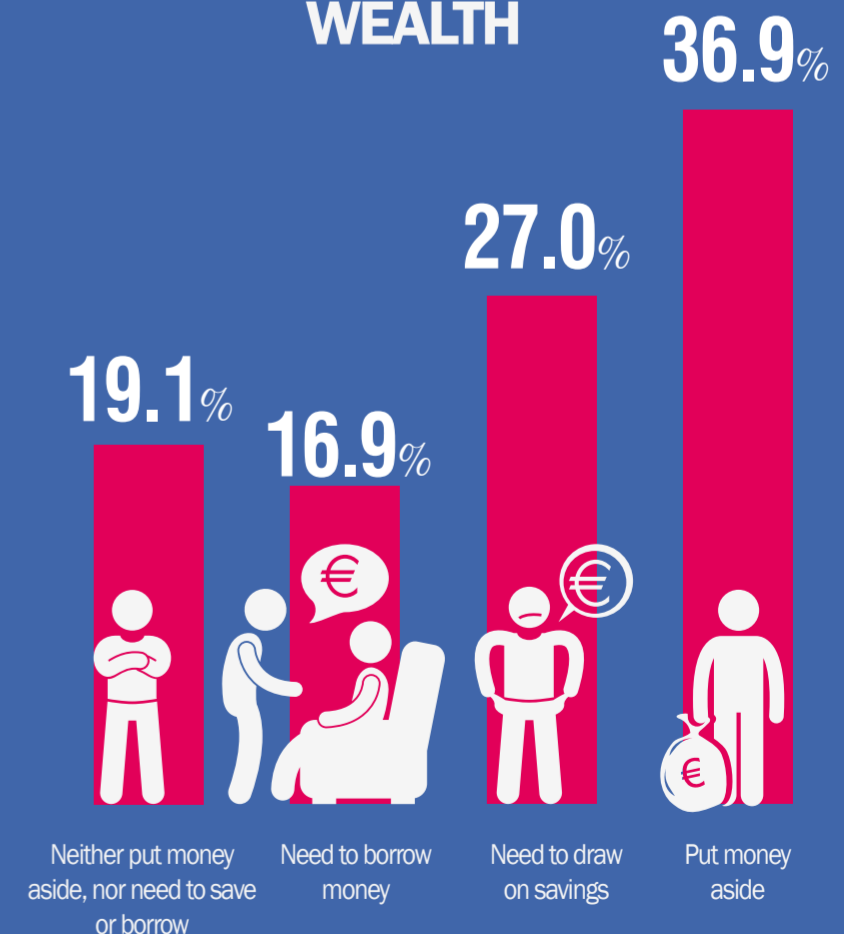
## PURPOSE OF LOAN



## CONSUMPTION PER MONTH (average amount, in euro)



## WEALTH



POOR, NON-POOR HOUSEHOLDS: REFERENCE INCOME YEAR 2019